

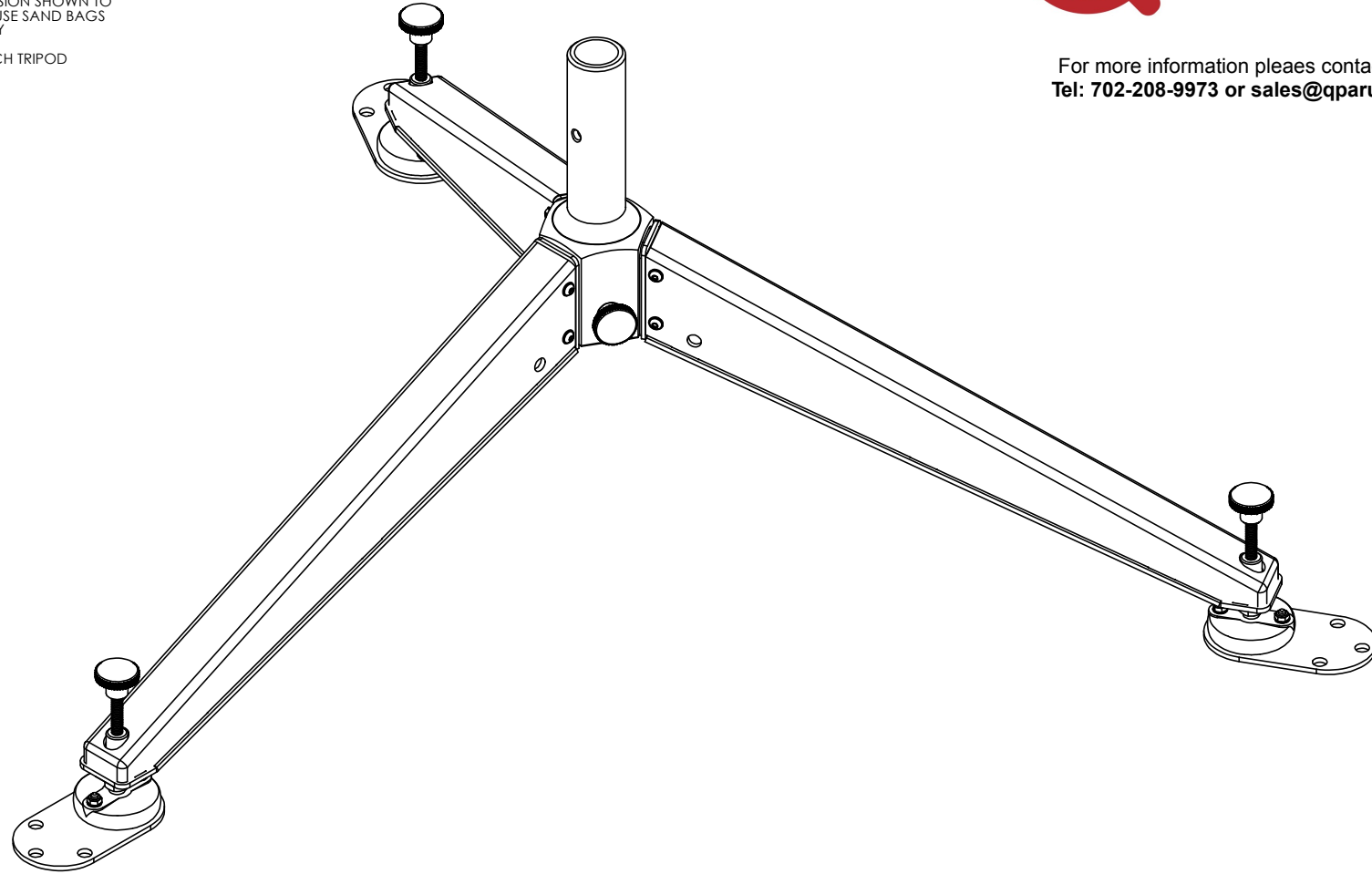
NOTES: UNLESS OTHERWISE SPECIFIED

1. TRIPOD INTERFACES DIRECTLY WITH ALL LINKALIGN POSITIONERS WITH 2 IN SOCKET. NO TOOLS REQUIRED
2. HARD COAT ANODIZE ALUMINUM CONSTRUCTION WITH STAINLESS STEEL HARDWARE
3. WEIGHT APPROXIMATELY 23 LBS
4. MAXIMUM PAYLOAD OF 200 LBS, INCLUDING POSITIONER
5. CENTER OF GRAVITY OF POSITIONER AND PAYLOAD MUST NOT EXCEED DIAMETER DIMENSION SHOWN TO PREVENT TIPPING. STAKE DOWN OR USE SAND BAGS ON TRIPOD LEGS TO ENSURE STABILITY
6. 1.6 INCHES OF ADJUSTABILITY AT EACH TRIPOD LEVELING LEG

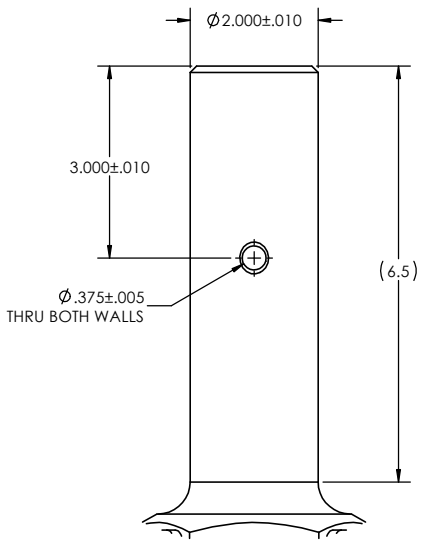
REV	DESCRIPTION	DATE	APPROVED
A	IR800496	2018-10-25	SRC



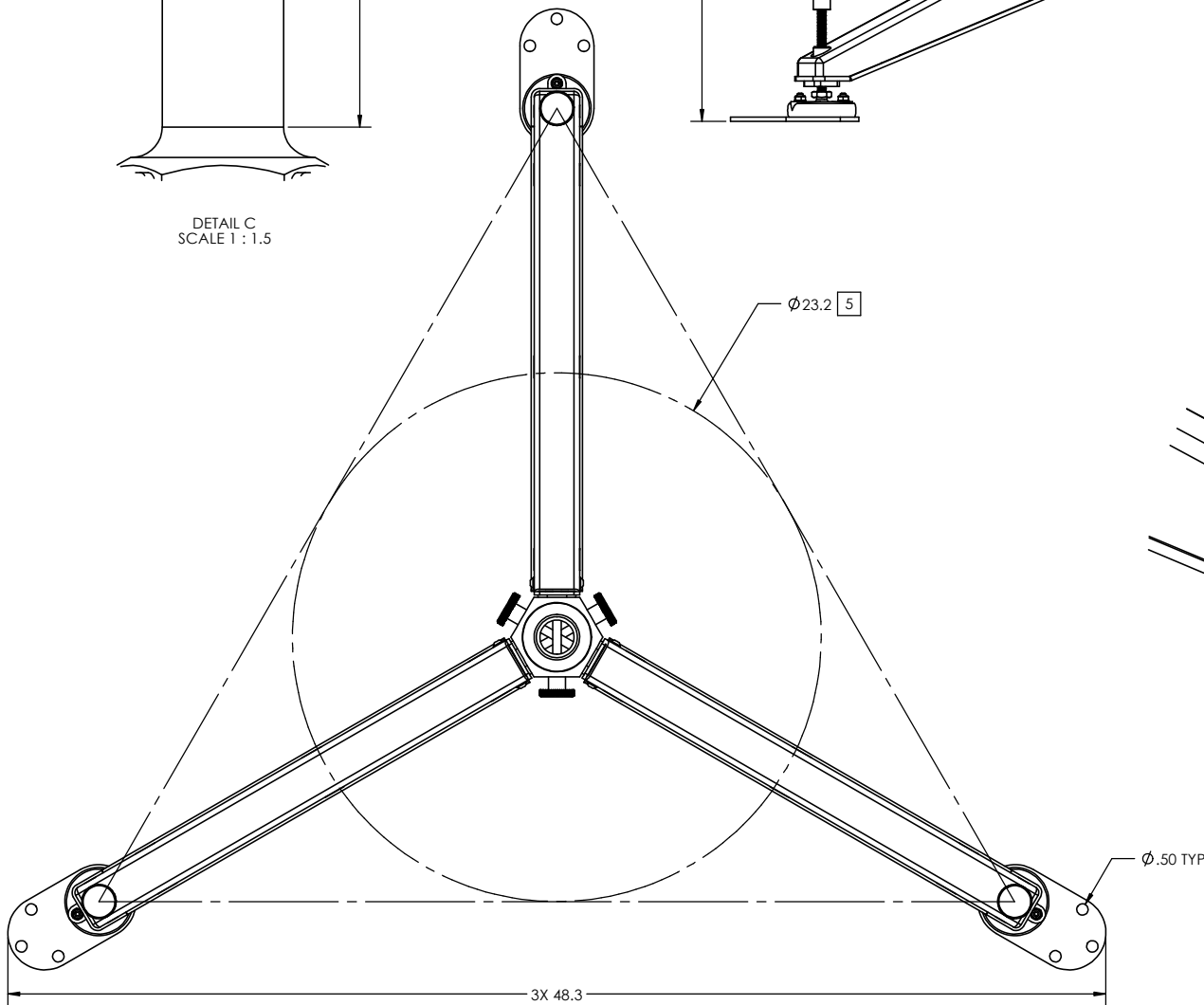
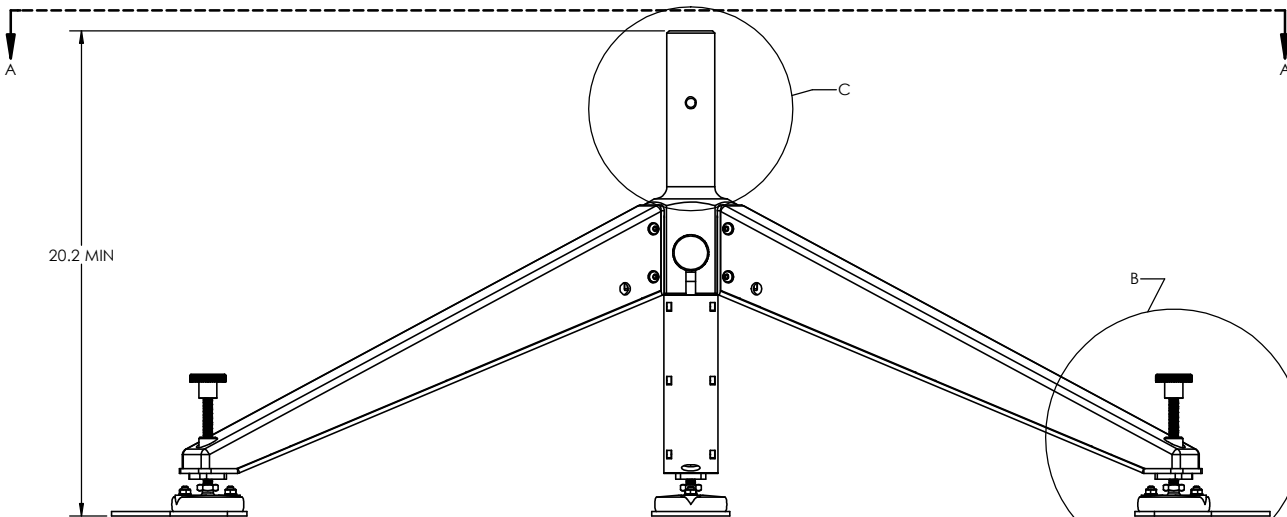
For more information please contact us at:
Tel: 702-208-9973 or sales@qparusa.com



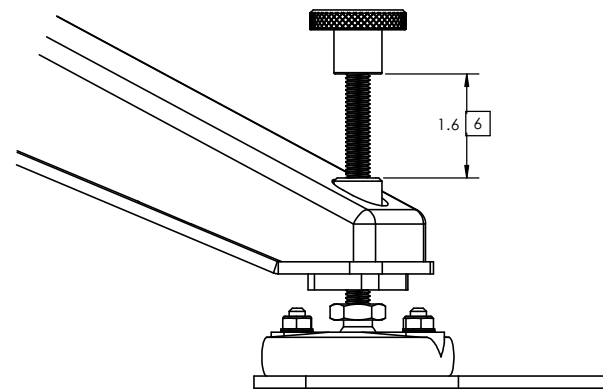
SYMBOL KEY <input type="checkbox"/> NOTE <input type="checkbox"/> PL ITEMS THE INFORMATION CONTAINED IN THIS DRAWING IS THE SOLE PROPERTY OF Q-PAR Antennas USA, LLC. ANY REPRODUCTION IN PART OR AS A WHOLE WITHOUT THE WRITTEN PERMISSION OF Q-PAR Antennas USA IS PROHIBITED. Q-PAR Antennas USA, LLC San Diego, CA 92020 www.qparusa.com	UNLESS OTHERWISE SPECIFIED: DIMENSIONS ARE IN INCHES TOLERANCES: ANGLE ± .5 DEGREES TWO PLACE DECIMAL ± .030 THREE PLACE DECIMAL ± .010 INTERPRET DIM AND TOL PER ASME Y14.5M - 1994	DRAWN: S. CHEYNE 2018-10-25	Q-PAR Antennas USA, LLC TITLE: TRIPOD ASSEMBLY, HEAVY DUTY
		CHECKED: ME APPR: S. CHEYNE 2018-10-25 EE APPR:	
THIRD ANGLE PROJECTION DO NOT SCALE DRAWING	PART NO. QACC-N900413-1	SIZE DWG. NO. C ICDN900413	REV A
SCALE: 1:3		SHEET 1 OF 3	



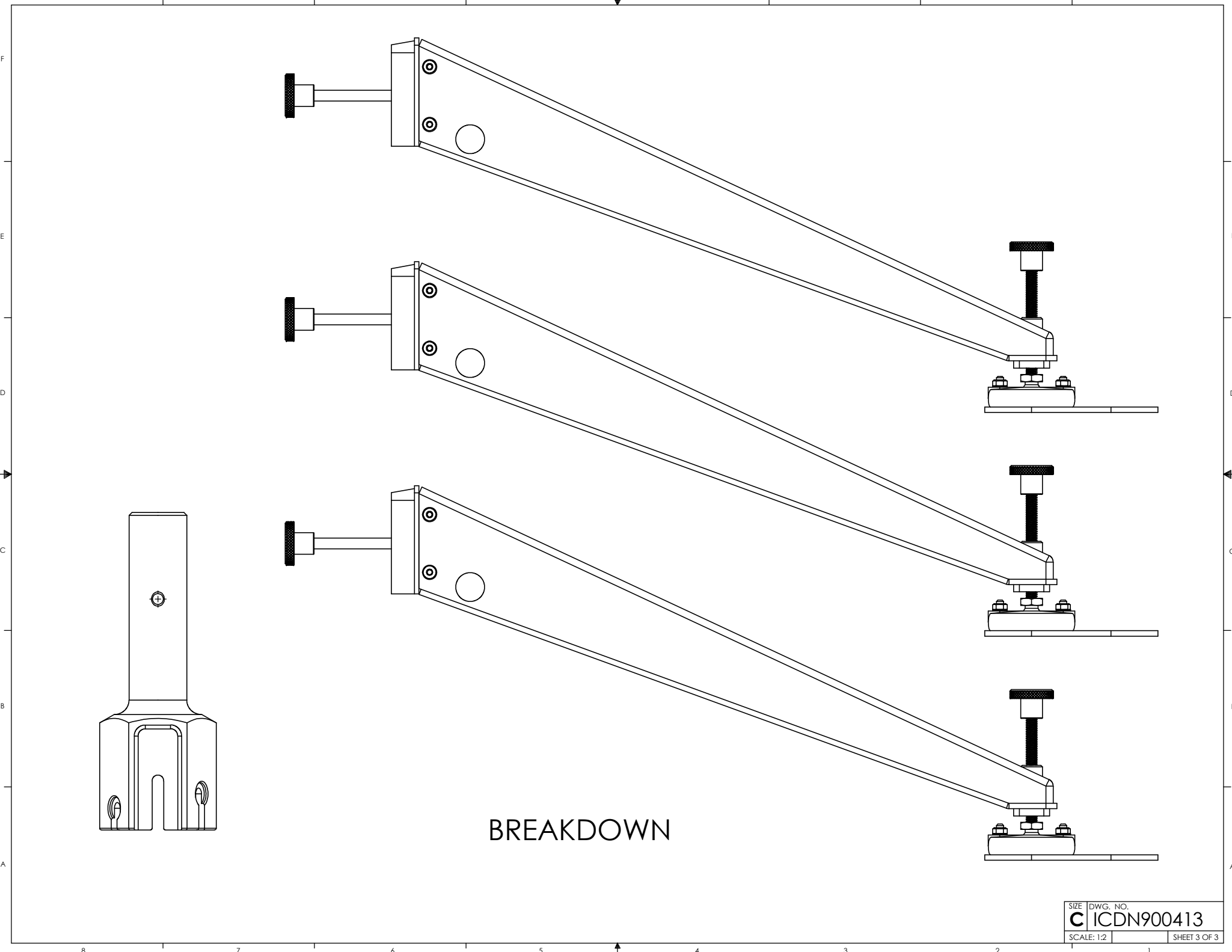
DETAIL C
SCALE 1 : 1.5



VIEW A-A



DETAIL B
SCALE 1 : 1.5
3 PLACES



BREAKDOWN