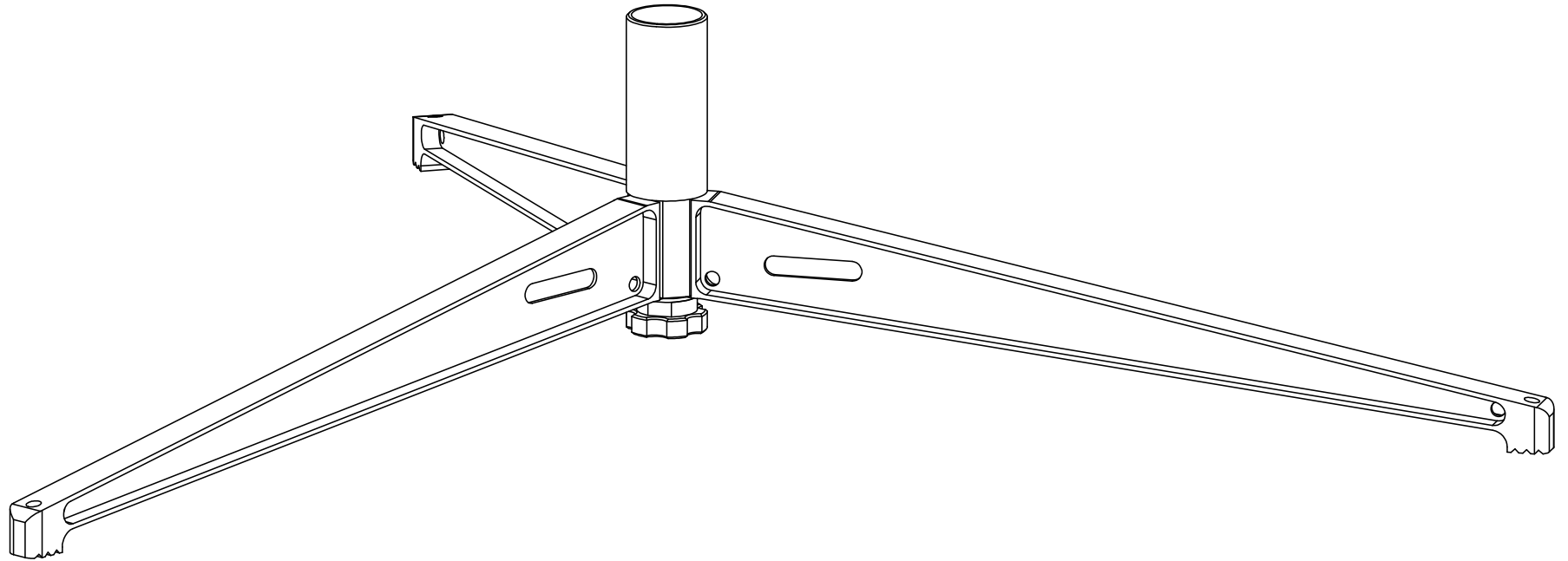


8 7 6 5 4 3 2 1

REV	DESCRIPTION	DATE	APPROVED
B	CN601352	2024-02-16	SRC

NOTES: UNLESS OTHERWISE SPECIFIED

1. TRIPOD INTERFACES DIRECTLY WITH ALL LINKALIGN-360 AND LINKASAT POSITIONERS THAT NATIVELY HAVE A 2 INCH SOCKET OR WITH A 2 INCH SOCKET ADAPTER FOR POSITIONERS WITH TABLE TOP MOUNTS. NO TOOLS REQUIRED
2. HARD COAT ANODIZE ALUMINUM CONSTRUCTION WITH STAINLESS STEEL HARDWARE. MAST IS UNPLATED
3. WEIGHT: APPROXIMATELY 4.1 LBS (1.9 kg)
4. MAXIMUM PAYLOAD NOT TO EXCEED 100 LBS (45.3 kg)
5. CENTER OF GRAVITY OF POSITIONER AND PAYLOAD MUST NOT EXCEED INDICATED DIAMETER. TO PREVENT TIPPING USE SAND BAGS, STRAPS OR STAKE DOWN USING INDICATED HOLES AND SLOT
6. TO ASSEMBLY, LOOSEN KNOB THEN INSERT LEGS INTO CORRESPONDING DOVETAIL V-GROOVES. ONCE ALL LEGS ARE ASSEMBLED TIGHTEN KNOB

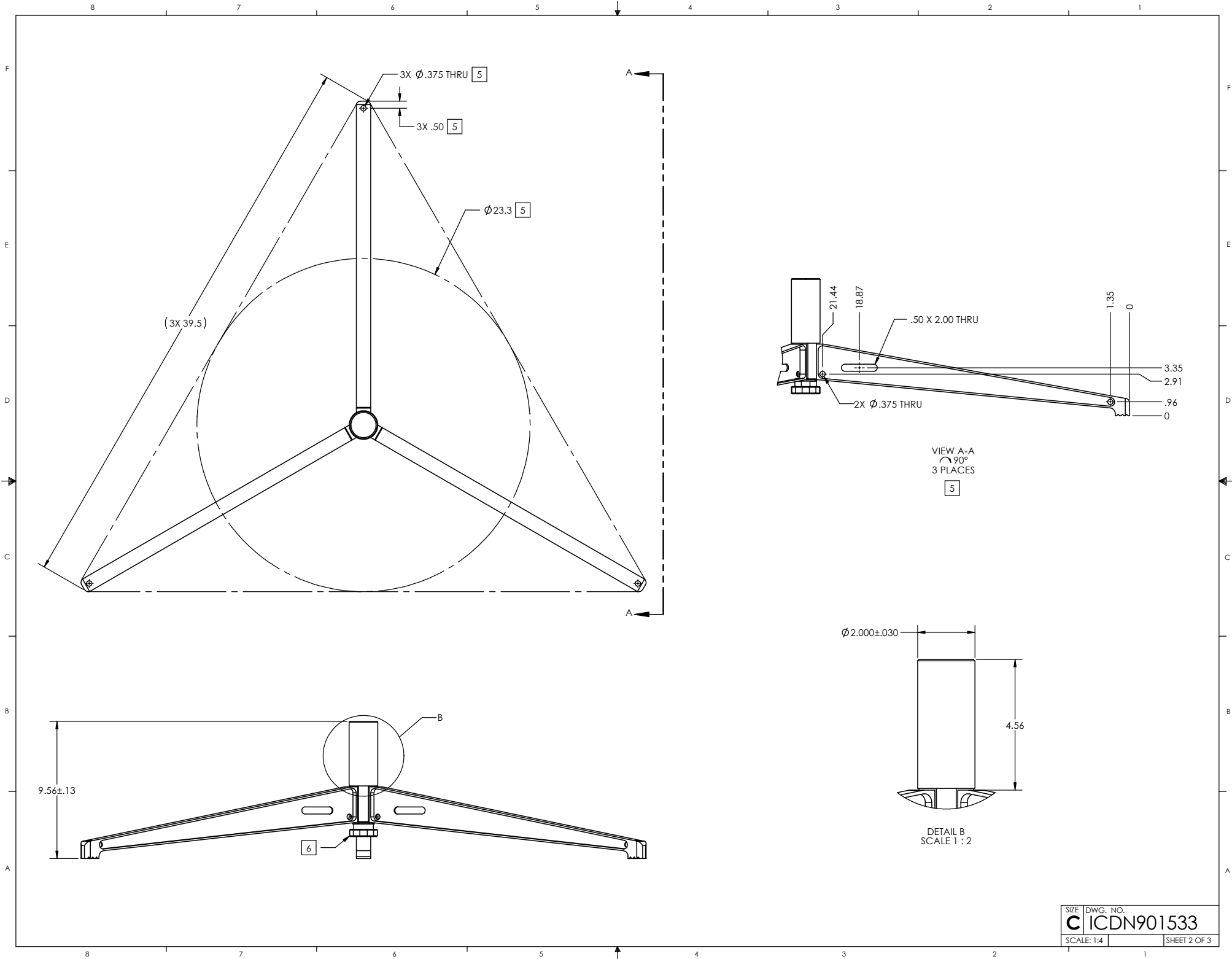


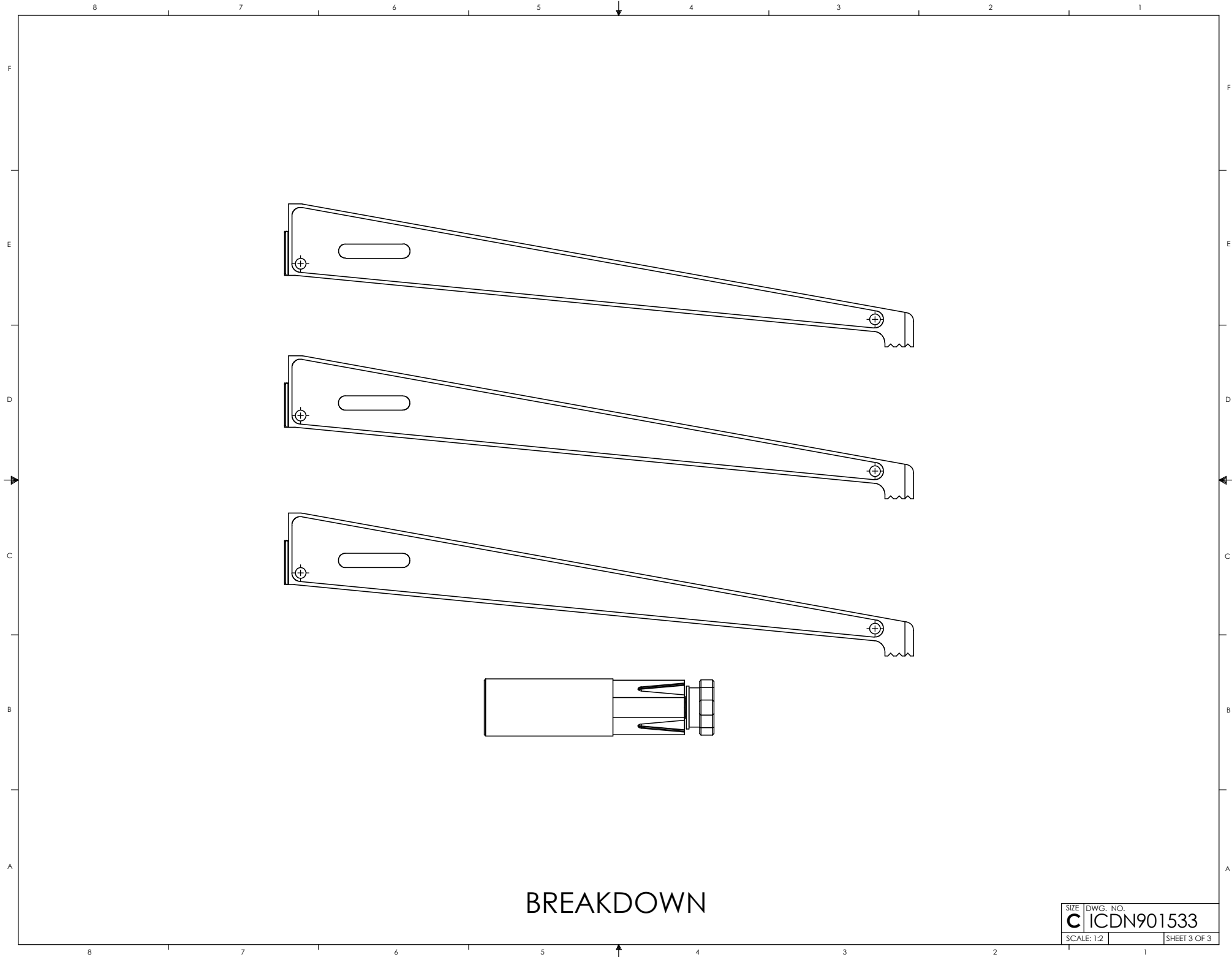
F
E
D
C
B
A

F
E
D
C
B
A

SYMBOL KEY <input type="checkbox"/> NOTE <input type="checkbox"/> PL ITEMS	UNLESS OTHERWISE SPECIFIED: DIMENSIONS ARE IN INCHES TOLERANCES ANGLE ± .5 DEGREES TWO PLACE DECIMAL ±.030 THREE PLACE DECIMAL ±.010 INTERPRET DIM AND TOL PER ASME Y14.5M - 1994	DRAWN S. CHEYNE 2024-01-18 CHECKED C. CHEYNE 2024-01-18 ME APPR. S. CHEYNE 2024-01-18 EE APPR.	QPAR Antennas USA, LLC TITLE: LIGHTWEIGHT TRIPOD INTERFACE CONTROL DRAWING
		PART NO. ACC-N901533-1	SIZE DWG. NO. C ICDN901533
QPAR ANTENNAS USA, LLC SAN DIEGO, CA 92020 www.qparusa.com		DO NOT SCALE DRAWING	SCALE: 1:2 SHEET 1 OF 3

8 7 6 5 4 3 2 1





BREAKDOWN

SIZE	DWG. NO.
C	ICDN901533
SCALE: 1:2	SHEET 3 OF 3