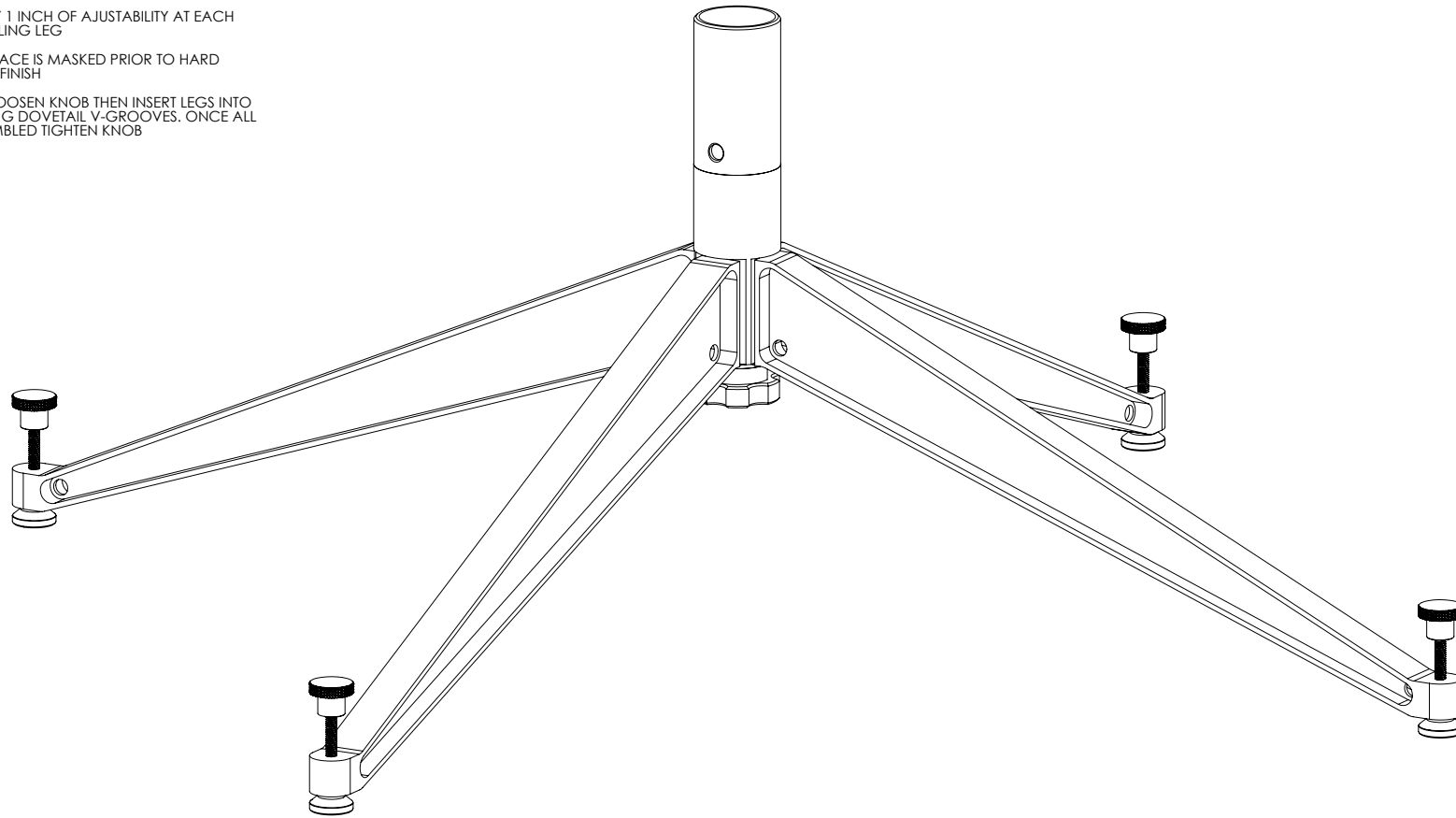


8 7 6 5 4 3 2 1

REV	DESCRIPTION	DATE	APPROVED
B	CN601338	2024-01-16	SRC

NOTES: UNLESS OTHERWISE SPECIFIED

1. QUADPOD INTERFACES DIRECTLY WITH ALL LINKALIGN-360 AND LINKASAT POSITIONERS THAT NATIVELY HAVE A 2 INCH SOCKET OR WITH A 2 INCH SOCKET ADAPTER FOR POSITIONERS WITH TABLE TOP MOUNTS. NO TOOLS REQUIRED
2. HARD COAT ANODIZE ALUMINUM CONSTRUCTION WITH STAINLESS STEEL HARDWARE
3. WEIGHT: APPROXIMATELY 5.5 LBS (2.5 kg)
4. MAXIMUM PAYLOAD NOT TO EXCEED 100 LBS (45.3 kg)
5. CENTER OF GRAVITY OF POSITIONER AND PAYLOAD MUST NOT EXCEED INDICATED DIAMETER TO PREVENT TIPPING USE SAND BAGS OR STAKE DOWN USING HOLES DETAILED ON SHEET 2, VIEW A-A
6. APPROXIMATELY 1 INCH OF AJUSTABILITY AT EACH QUADPOD LEVELING LEG
7. INDICATED SURFACE IS MASKED PRIOR TO HARD COAT ANODIZE FINISH
8. TO ASSEMBLY, LOOSEN KNOB THEN INSERT LEGS INTO CORRESPONDING DOVETAIL V-GROOVES. ONCE ALL LEGS ARE ASSEMBLED TIGHTEN KNOB

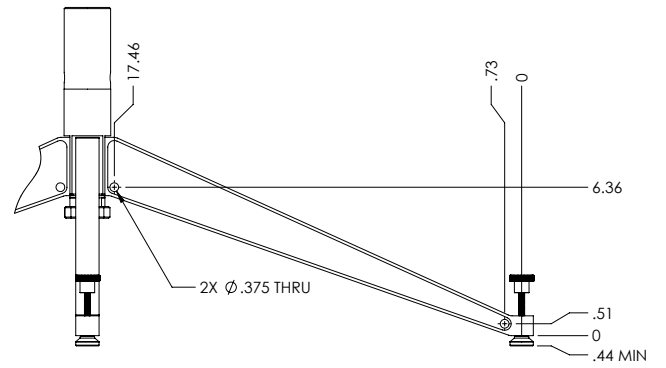
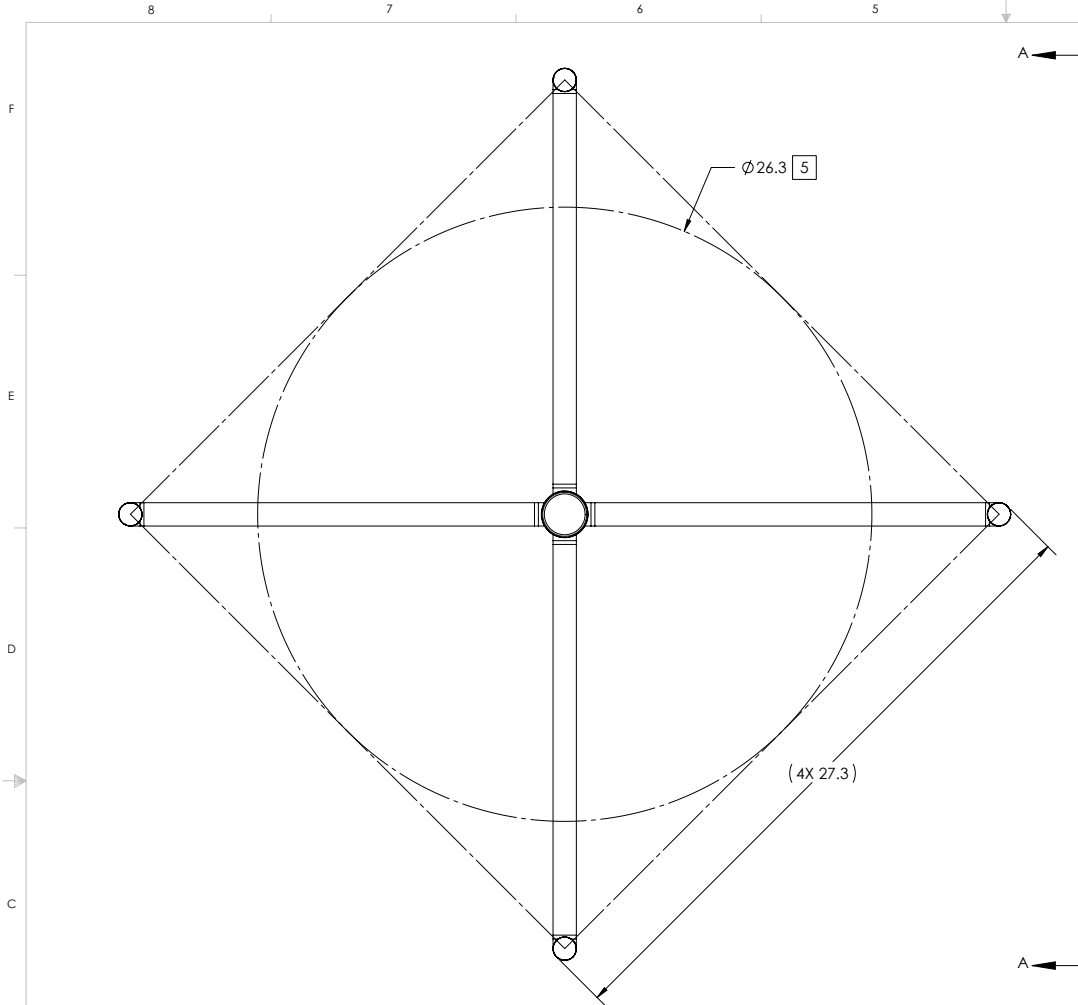


F
E
D
C
B
A

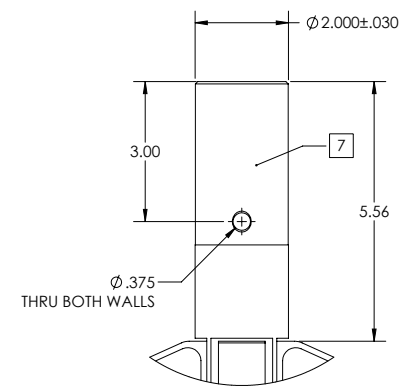
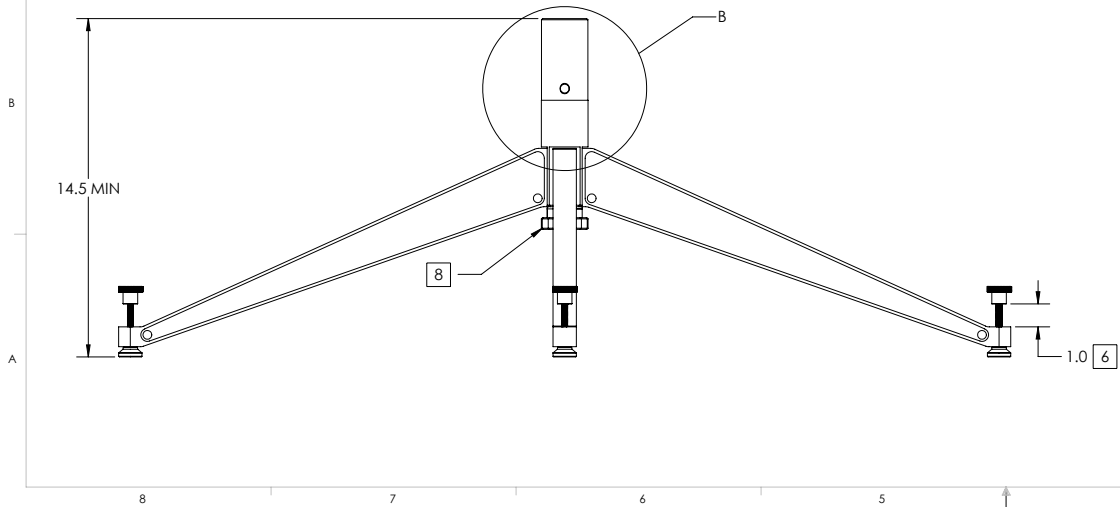
F
E
D
C
B
A

8 7 6 5 4 3 2 1

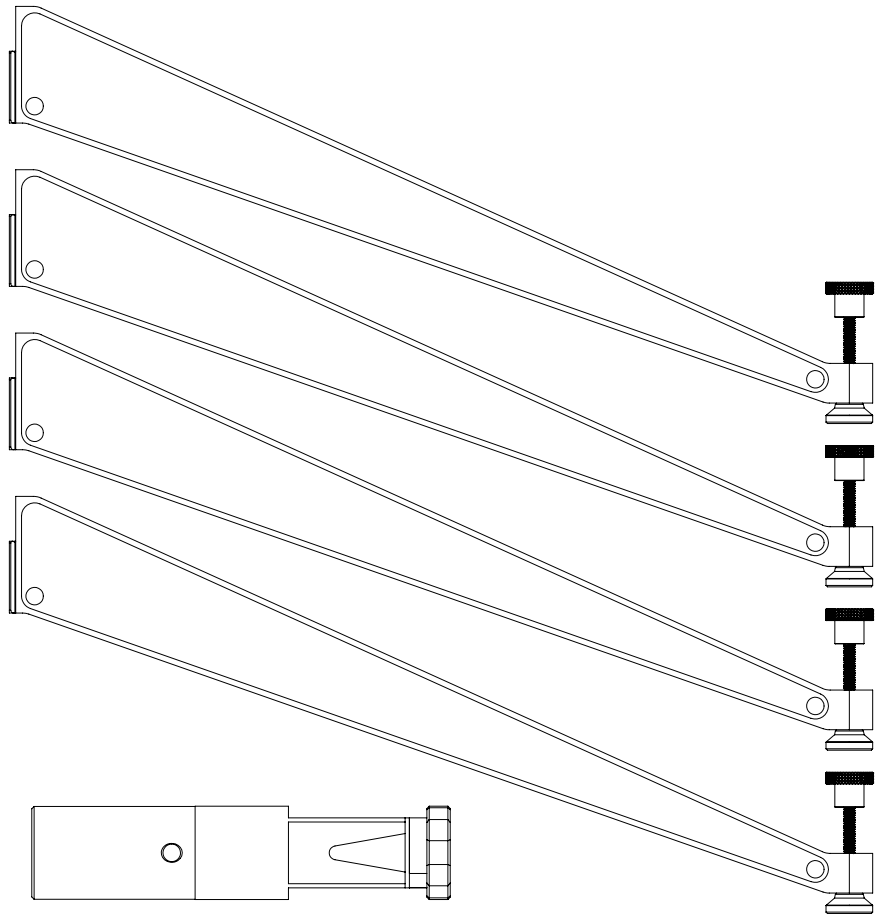
<p>SYMBOL KEY</p> <p>□ NOTE ○ PL ITEMS</p> <p>PROPRIETARY AND CONFIDENTIAL THE INFORMATION CONTAINED IN THIS DRAWING IS THE SOLE PROPERTY OF QPAR ANTENNAS USA, LLC. ANY REPRODUCTION IN PART OR AS A WHOLE WITHOUT THE WRITTEN PERMISSION OF NEXTMOVE TECHNOLOGIES IS PROHIBITED.</p> <p>QPAR ANTENNAS USA, LLC SAN DIEGO, CA 92020 www.qparusa.com</p>	<p>UNLESS OTHERWISE SPECIFIED:</p> <p>DIMENSIONS ARE IN INCHES</p> <p>TOLERANCES: ANGLE ± .5 DEGREES TWO PLACE DECIMAL ± .030 THREE PLACE DECIMAL ± .010</p> <p>INTERPRET DIM AND TOL PER ASME Y14.5M - 1994</p> <p>THIRD ANGLE PROJECTION</p> <p>DO NOT SCALE DRAWING</p>	<p>DRAWN S. CHEYNE 2023-02-13</p> <p>CHECKED C. CHEYNE 2023-02-13</p> <p>ME APPR. S. CHEYNE 2023-02-13</p> <p>EE APPR.</p>	<p>QPAR Antennas USA, LLC</p> <p>TITLE: LIGHTWEIGHT QUADPOD INTERFACE CONTROL DRAWING</p>
		<p>PART NO. ACC-N901395-1</p>	<p>SIZE DWG. NO. REV</p> <p>C ICDN901395 B</p>
		<p>SCALE: 1:2</p>	<p>SHEET 1 OF 3</p>



VIEW A-A
 90°
 4 PLACES
5



DETAIL B
 SCALE 1 : 2



BREAKDOWN