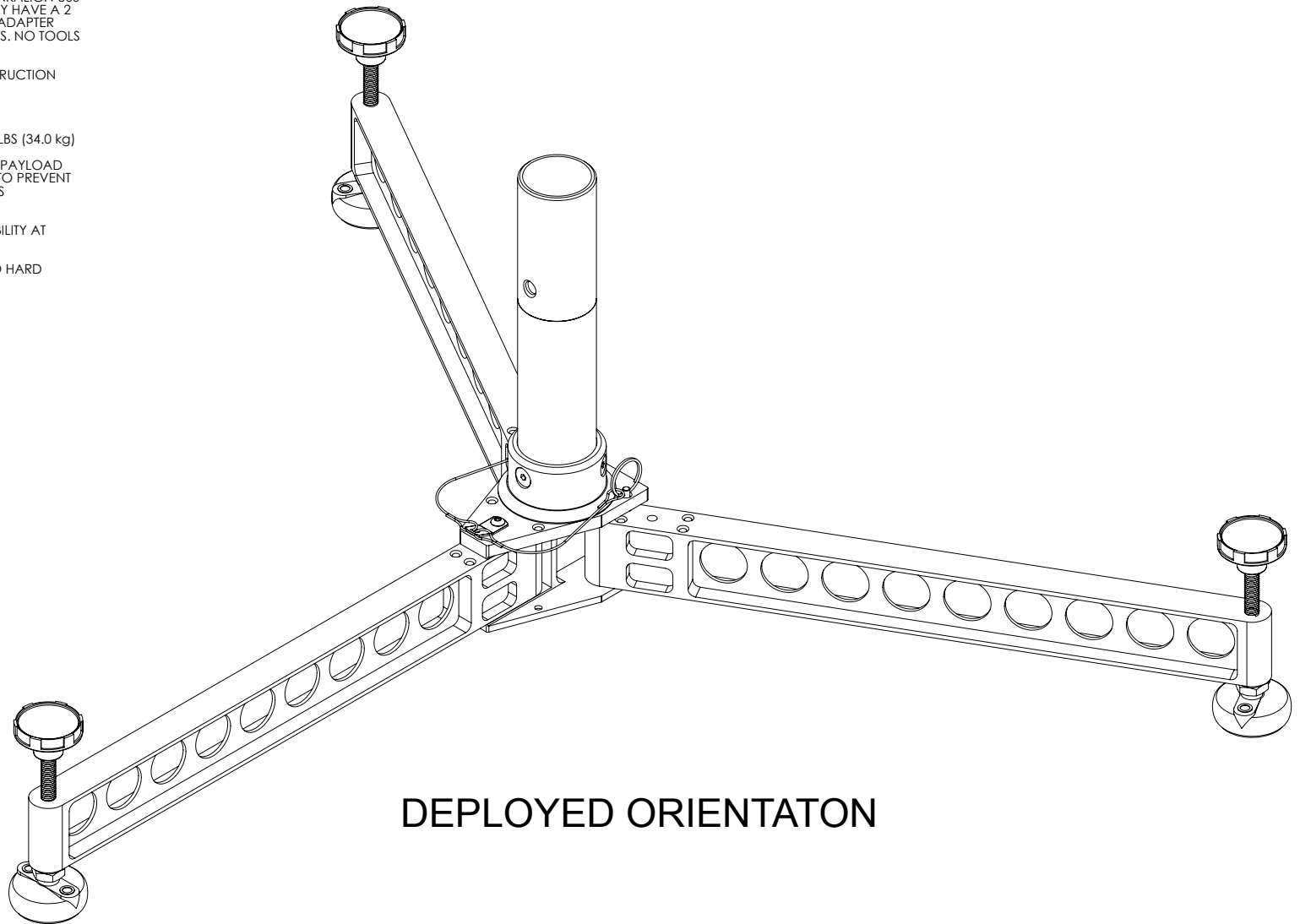


8 7 6 5 4 3 2 1

REV	DESCRIPTION	DATE	APPROVED
C	CN601333	2024-01-16	SRC

NOTES: UNLESS OTHERWISE SPECIFIED

1. TRIPOD INTERFACES DIRECTLY WITH ALL LINKALIGN-360 AND LINKASAT POSITIONERS THAT NATIVELY HAVE A 2 INCH SOCKET OR WITH A 2 INCH SOCKET ADAPTER FOR POSITIONERS WITH TABLE TOP MOUNTS. NO TOOLS REQUIRED
2. HARD COAT ANODIZE ALUMINUM CONSTRUCTION WITH STAINLESS STEEL HARDWARE
3. WEIGHT APPROXIMATELY 6.0 LBS (2.7 kg)
4. MAXIMUM PAYLOAD NOT TO EXCEED 75 LBS (34.0 kg)
5. CENTER OF GRAVITY OF POSITIONER AND PAYLOAD MUST NOT EXCEED INDICATED DIAMETER TO PREVENT TIPPING. STAKE DOWN OR USE SAND BAGS ON TRIPOD LEGS TO ENSURE STABILITY
6. APPROXIMATELY 1.4 INCHES OF ADJUSTABILITY AT EACH TRIPOD LEVELING LEG
7. INDICATED SURFACE IS MASKED PRIOR TO HARD COAT ANODIZE FINISH



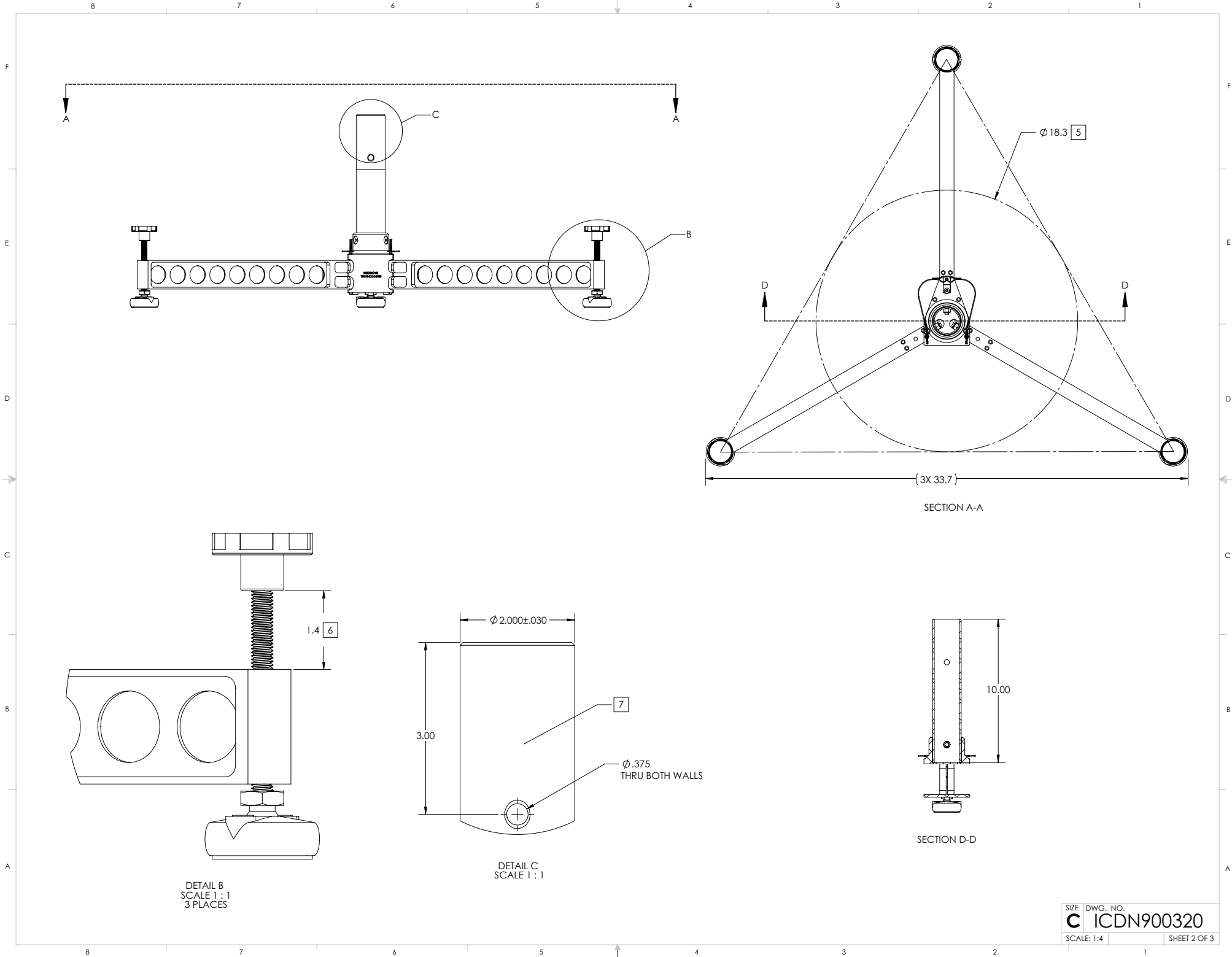
DEPLOYED ORIENTATON

F
E
D
C
B
A

F
E
D
C
B
A

<p>SYMBOL KEY</p> <p>□ NOTE ○ PL ITEMS</p> <p>PROPRIETARY AND CONFIDENTIAL THE INFORMATION CONTAINED IN THIS DRAWING IS THE SOLE PROPERTY OF QPAR ANTENNAS USA, LLC. ANY REPRODUCTION IN PART OR AS A WHOLE WITHOUT THE WRITTEN PERMISSION OF NEXTMOVE TECHNOLOGIES IS PROHIBITED.</p> <p>QPAR ANTENNAS USA, LLC SAN DIEGO, CA 92020 www.qparusa.com</p>	<p>UNLESS OTHERWISE SPECIFIED:</p> <p>DIMENSIONS ARE IN INCHES</p> <p>TOLERANCES</p> <p>ANGLE ± .5 DEGREES</p> <p>ONE PLACE DECIMAL ±.100</p> <p>TWO PLACE DECIMAL ±.050</p> <p>THREE PLACE DECIMAL ±.010</p> <p>INTERPRET DIM AND TOL PER ASME Y14.5M - 1994</p> <p>THIRD ANGLE PROJECTION</p> <p>DO NOT SCALE DRAWING</p>	<p>DRAWN S. CHEYNE 2015-07-21</p> <p>CHECKED C. CHEYNE 2015-07-21</p> <p>ME APPR. S. CHEYNE 2015-07-21</p> <p>EE APPR.</p>	<p>QPAR Antennas USA, LLC</p> <p>TITLE: LIGHTWEIGHT FOLDING TRIPOD INTERFACE CONTROL DRAWING</p>
		<p>PART NO. ACC-N900320-10</p>	<p>SIZE DWG. NO. C ICDN900320</p>
		<p>SCALE: 1:2</p>	<p>REV C</p>
		<p>SHEET 1 OF 3</p>	

8 7 6 5 4 3 2 1

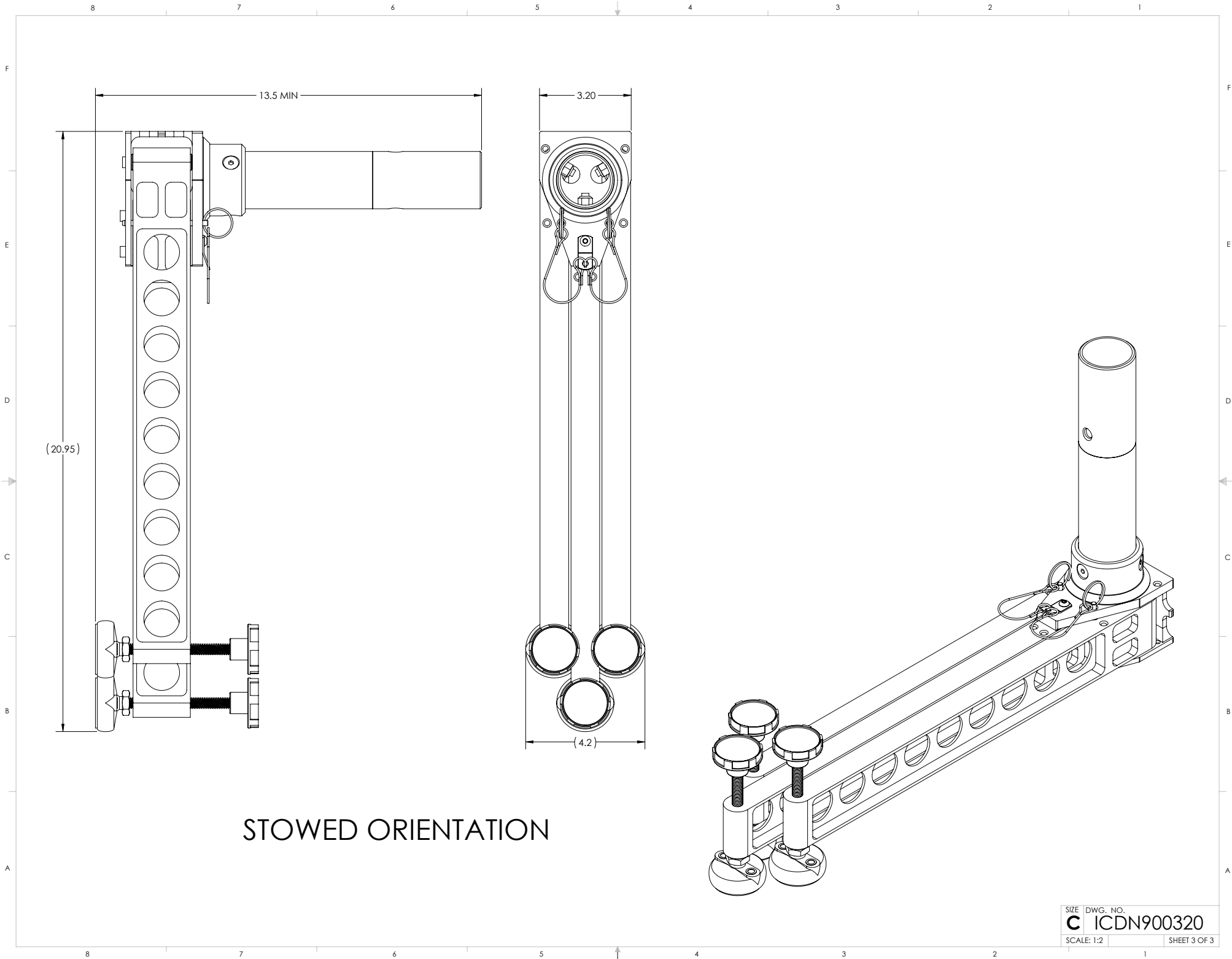


DETAIL B
SCALE 1 : 1
3 PLACES

DETAIL C
SCALE 1 : 1

SECTION A-A

SECTION D-D



STOWED ORIENTATION