

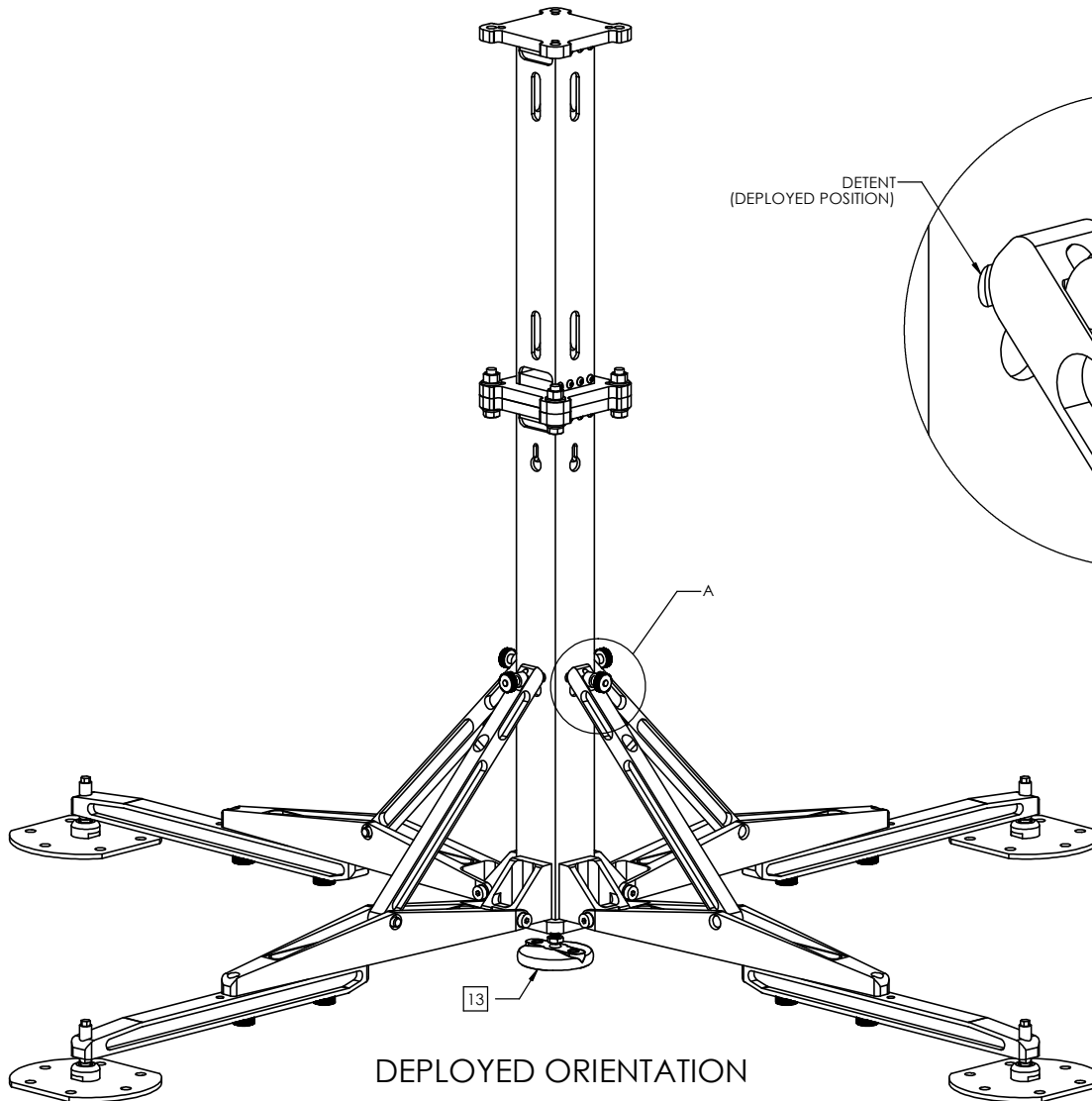
NOTES: UNLESS OTHERWISE SPECIFIED

- 1. QUADPOD INTERFACES DIRECTLY WITH QPAR POSITIONERS THAT CONTAIN TYPE-4.000, TYPE-4.000-P, TYPE-4.750 AND TYPE-4.70-P MOUNTING INTERFACE
- 2. HARD COAT ANODIZE ALUMINUM CONSTRUCTION WITH STAINLESS STEEL HARDWARE
- 3. WEIGHT APPROXIMATELY 60 LBS (27.2 kg). DOES NOT INCLUDE POSITIONER MOUNTING HARDWARE (NOT SHOWN)
- 4. PAYLOAD NOT TO EXCEED 750 LB (340.2 kg)
- 5. CENTER OF GRAVITY OF POSITIONER AND PAYLOAD MUST NOT EXCEED DIAMETER DIMENSION SHOWN TO PREVENT TIPPING. STAKE DOWN OR USE SAND BAGS ON TRIPOD LEGS TO ENSURE STABILITY

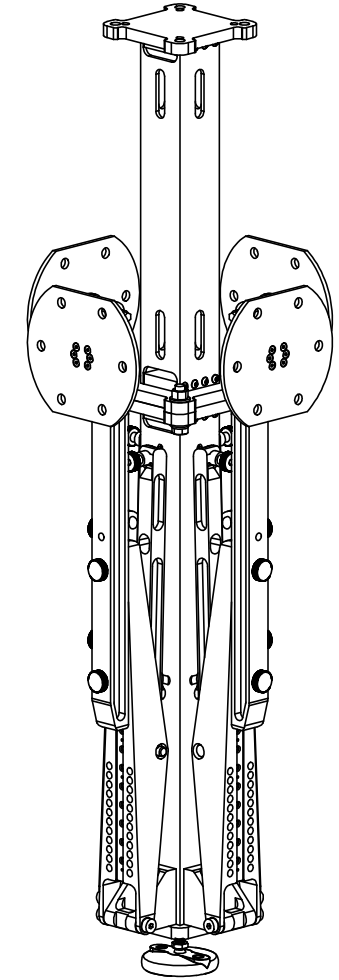
- 6. INDICATED DIMENSION SHOWS DEPLOYED HEIGHT OF QUADPOD WITH THREADED LEVELING LEGS AT MINIMUM SETTING
- 7. THREADED LEVELING LEGS HAVE APPROXIMATELY 1 INCH OF ADJUSTABILITY AND CAN BE ADJUSTED WITH USE OF A 7/16 INCH WRENCH OR SOCKET
- 9. WHEN IN THE DEPLOYED ORIENTATION, ENSURE THREADED KNOBS ARE TIGHTENED ADEQUATELY AND ANGLED STRUTS ARE IN DETENTED POSITION SHOWN
- 10. POSITIONER HARDWARE MOUNTING KITS ARE INCLUDED (NOT SHOWN)

- 11. QUADPOD COMES STANDARD WITH ONE RISER ASSEMBLY AS SHOWN THROUGHOUT DRAWING. ADDITIONAL RISER ASSEMBLY, PART NUMBER ACC-N901491-20. CAN BE PURCHASED SEPARATELY TO ADD 20 INCHES OF HEIGHT TO THE QUADPOD
- 12. INDICATED SLOT FEATURES TO BE USED FOR OPTIONAL TIE DOWN STRAP KIT, PART NUMBER ACC-N901495-1
- 13. ADJUST INDICATED MAST LEVELING LEG TO ENSURE SOLID CONTACT AND WEIGHT TRANSFER TO GROUND
- 14. SEE SHEETS 5 THRU 9 FOR ASSEMBLY INSTRUCTIONS

REV	DESCRIPTION	DATE	APPROVED
B	CN601344	2024-02-08	SRC



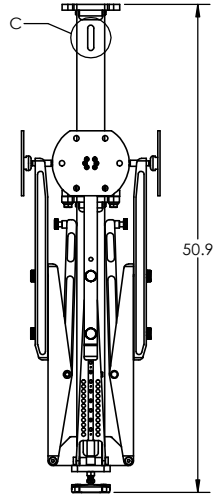
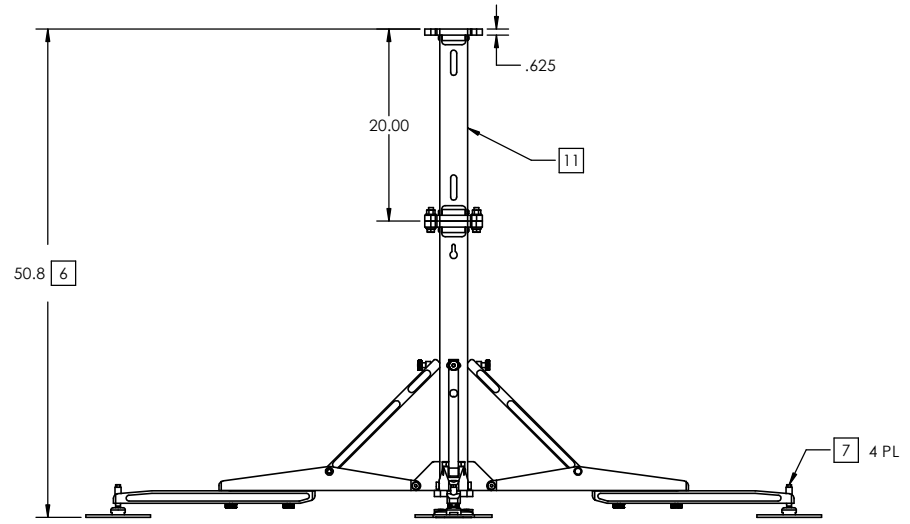
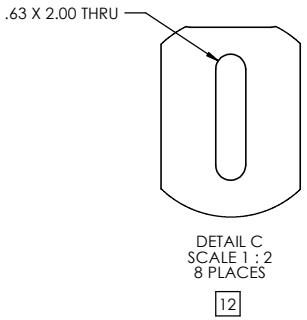
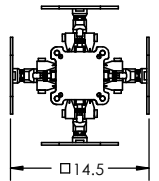
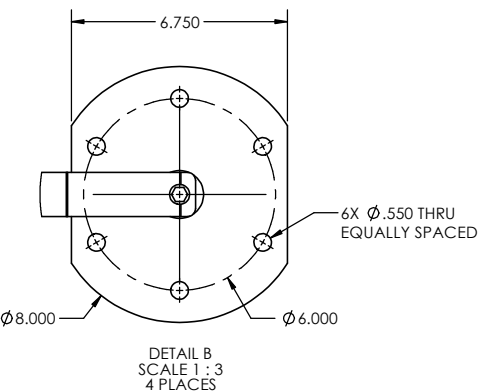
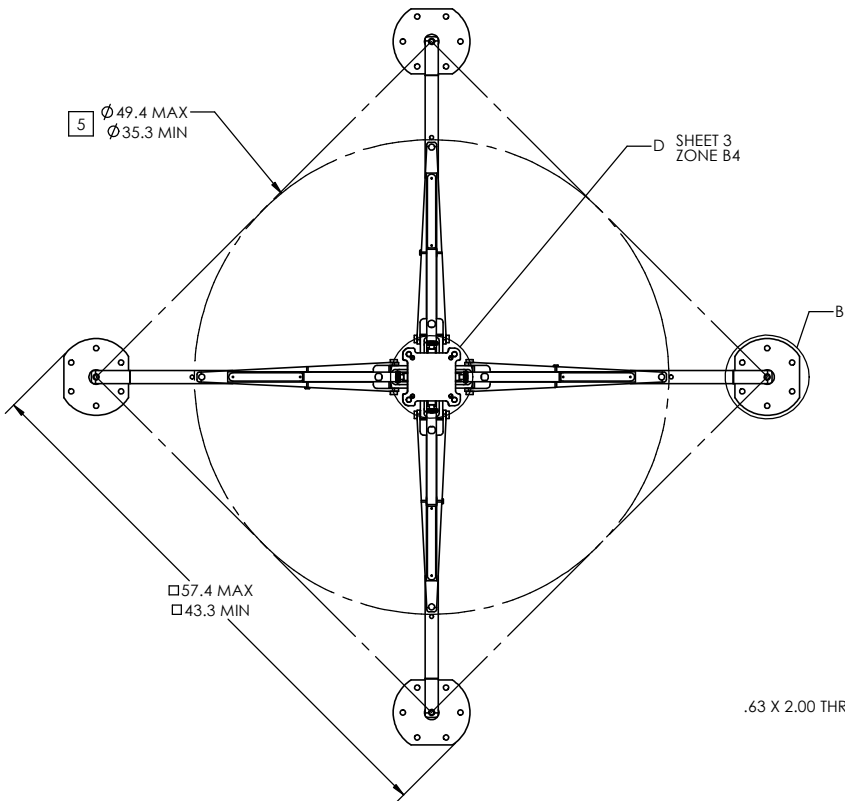
DEPLOYED ORIENTATION



STOWED ORIENTATION

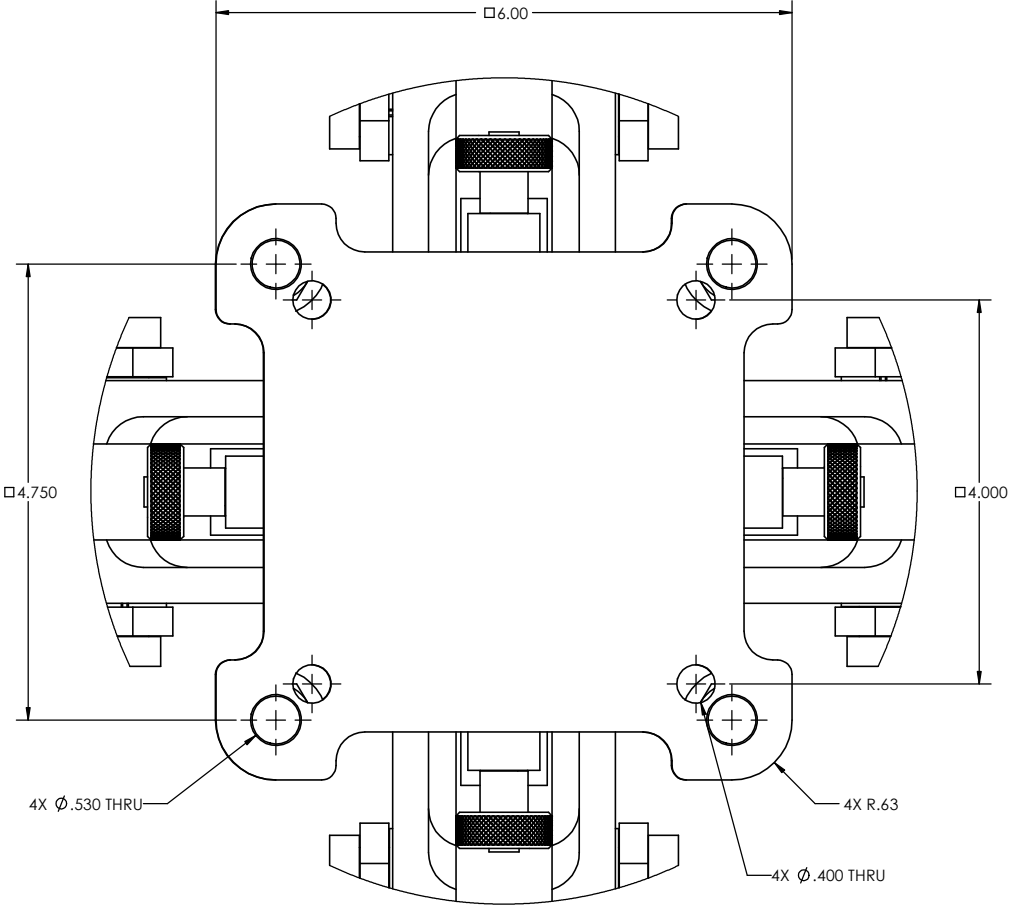
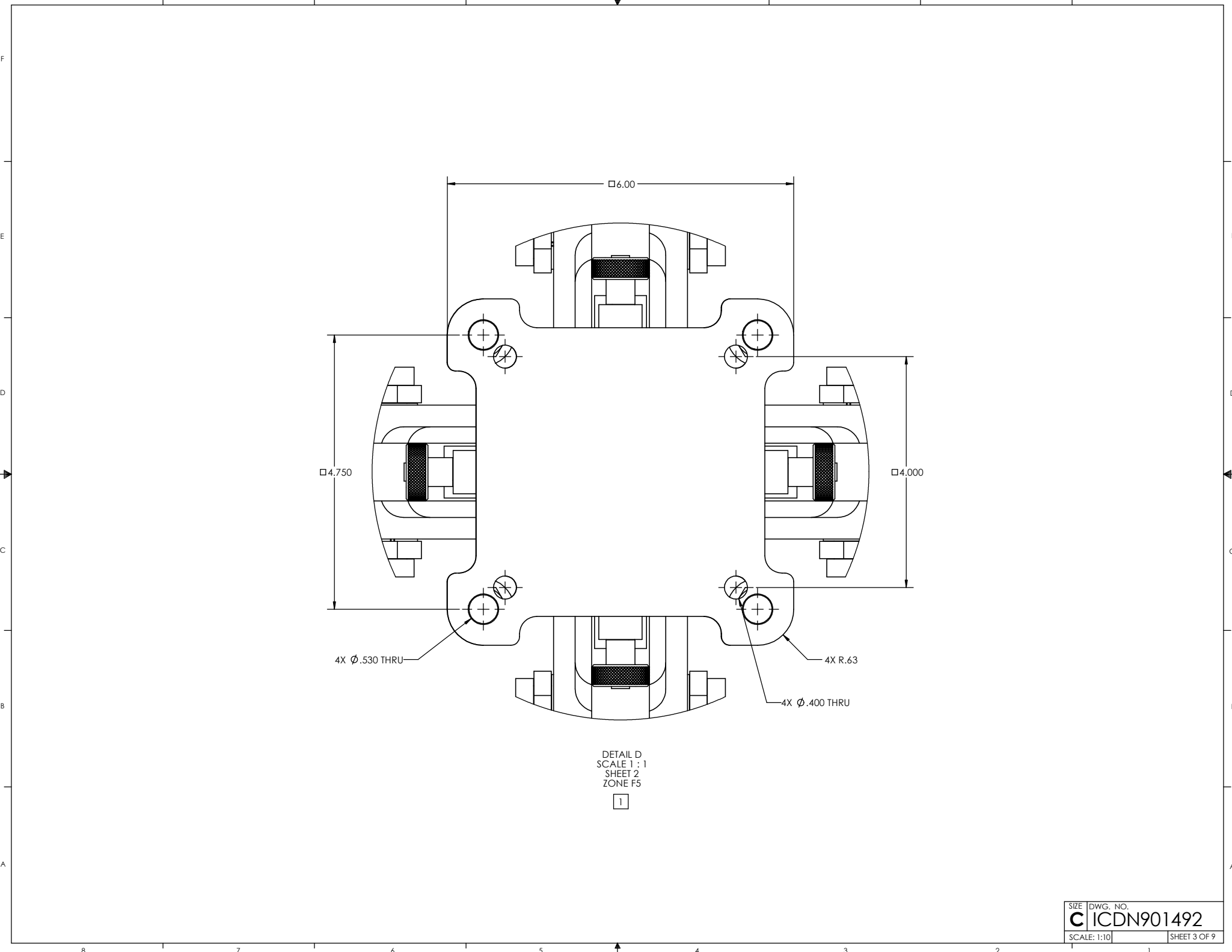
DETAIL A
SCALE 1 : 1
4 PLACES

SYMBOL KEY		UNLESS OTHERWISE SPECIFIED:		DRAWN		S. CHEYNE		2023-10-02		Q-PAR Antennas USA, LLC	
□	NOTE	○	PL ITEMS	CHECKED	C. CHEYNE	2023-10-05				TITLE:	
PROPRIETARY AND CONFIDENTIAL THE INFORMATION CONTAINED IN THIS DRAWING IS THE SOLE PROPERTY OF QPARUSA. ANY REPRODUCTION IN PART OR AS A WHOLE WITHOUT THE WRITTEN PERMISSION OF QPARUSA IS PROHIBITED.				DIMENSIONS ARE IN INCHES		TOLERANCES:				INTERFACE CONTROL DRAWING, EXTENDED HEAVY DUTY QUADPOD	
				ANGLE ± 0.05 DEGREES		TWO PLACE DECIMAL ± 0.00		THREE PLACE DECIMAL ± 0.010			
				INTERPRET DIM AND TOL PER ASME Y14.5M - 1994							
				THIRD ANGLE PROJECTION		PART NO.		ACC-N901492-1		SIZE DWG. NO.	
Q-PAR Antennas USA, LLC www.qparusa.com				DO NOT SCALE DRAWING						REV C ICDN901492 B	
								SCALE: 1:5		SHEET 1 OF 9	

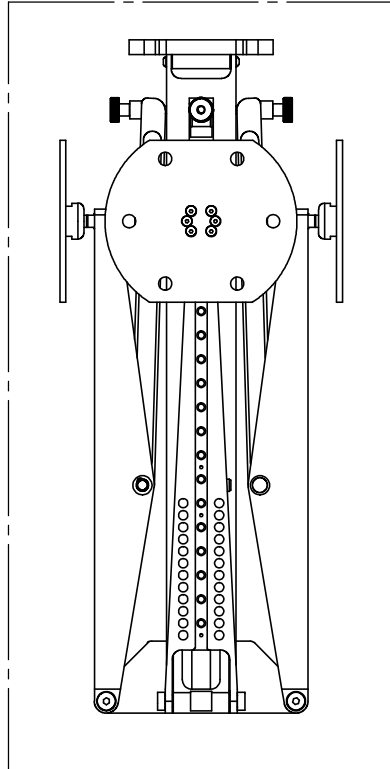


DEPLOYED ORIENTATION

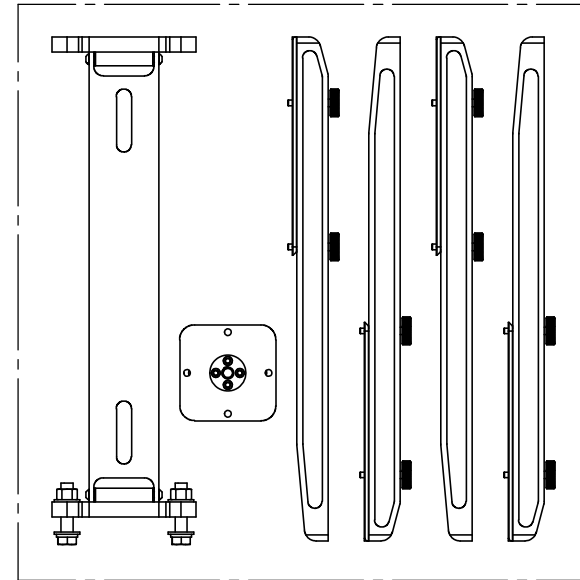
STOWED ORIENTATION



DETAIL D
SCALE 1 : 1
SHEET 2
ZONE F5
1

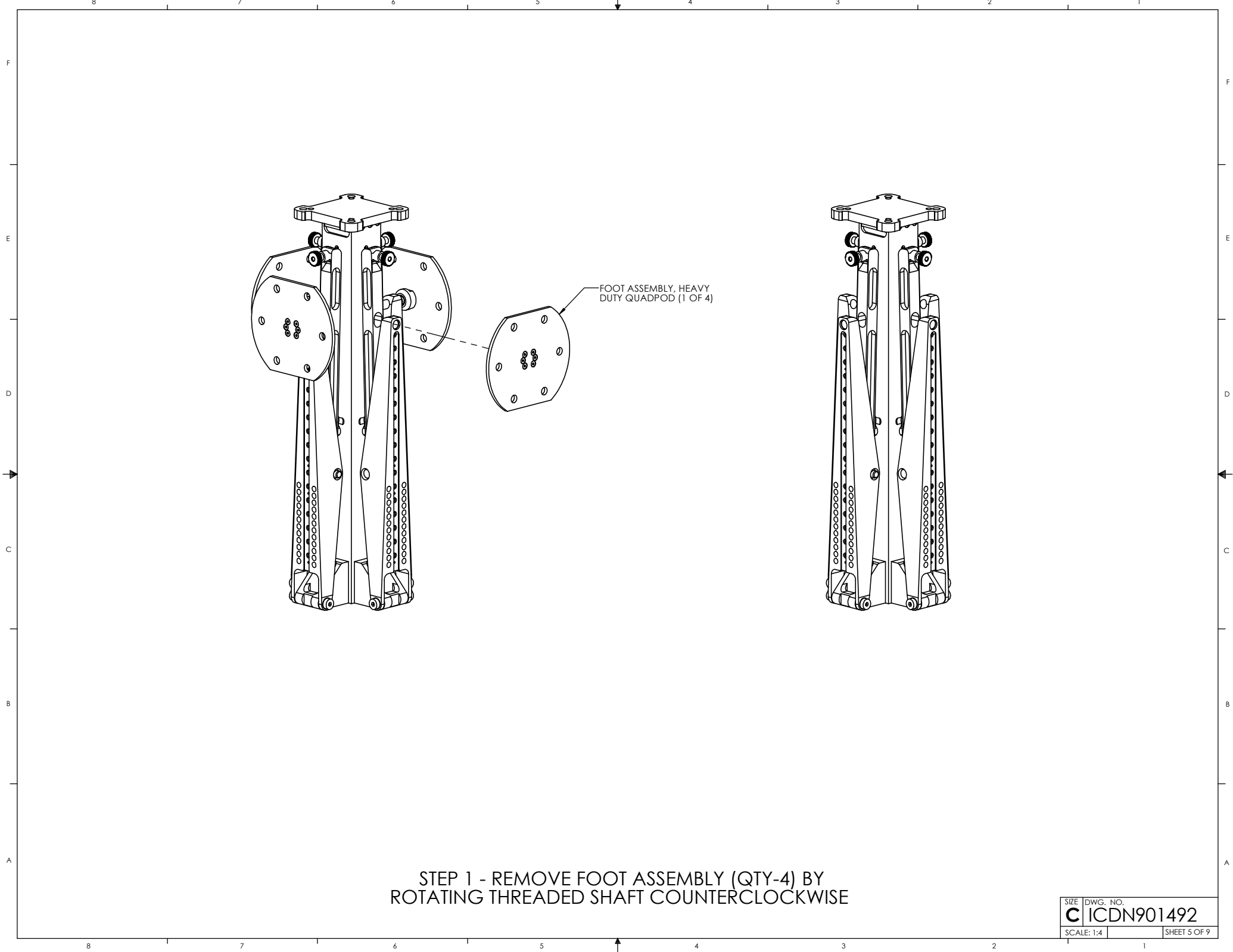


BOX 1 - 32" X 16" X 16"
 P/N - ACC-N901369-1
 HEAVY DUTY QUADPOD

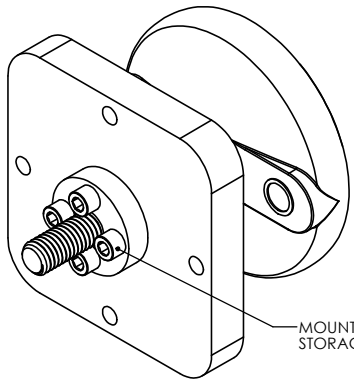


BOX 2 - 24" X 24" X 8"
 P/N - ACC-N901503-1
 SUPPLEMENTAL KIT, EXTENDED
 HEAVY DUTY QUADPOD

EXTENDED HEAVY DUTY QUADPOD SHIPPED IN TWO BOXES.
 SOME ASSEMBLY REQUIRED, SEE SHEET 5 THRU 9

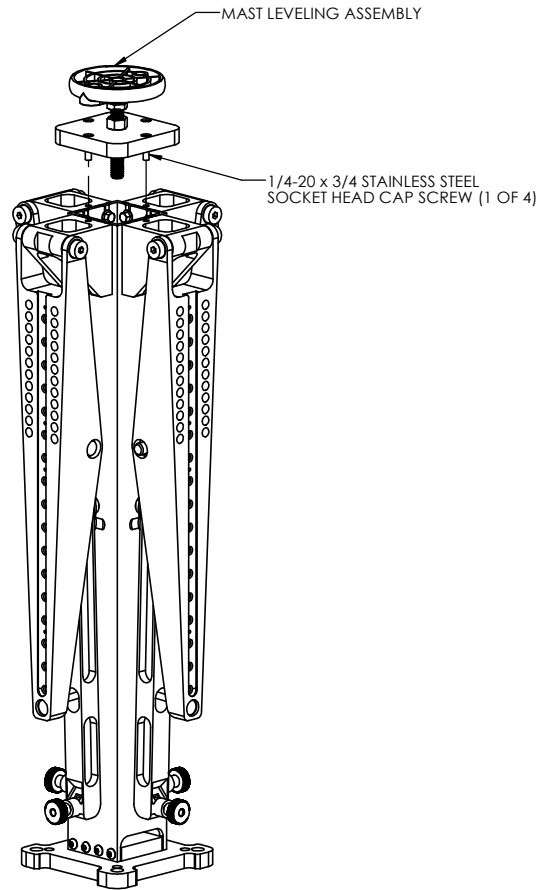


STEP 1 - REMOVE FOOT ASSEMBLY (QTY-4) BY
ROTATING THREADED SHAFT COUNTERCLOCKWISE



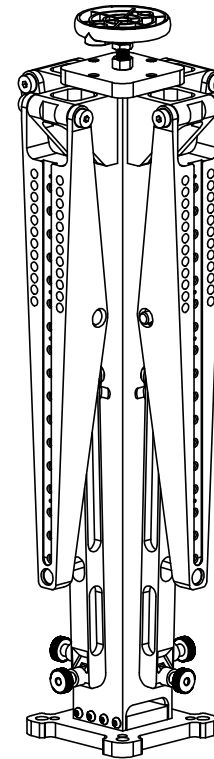
MAST LEVELING ASSEMBLY
(PACKAGED CONFIGURATION)

MOUNTING SCREWS
STORAGE LOCATION

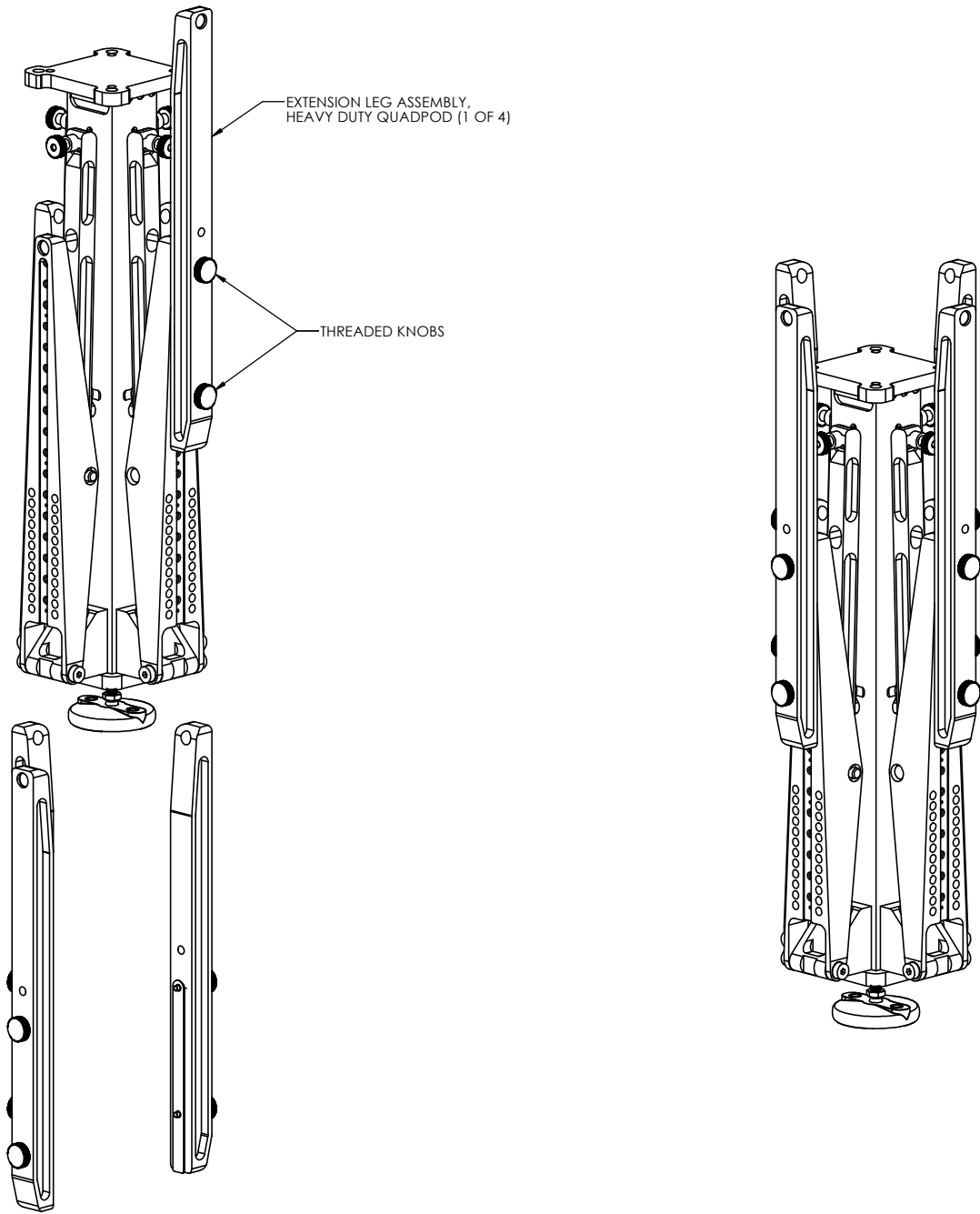


MAST LEVELING ASSEMBLY

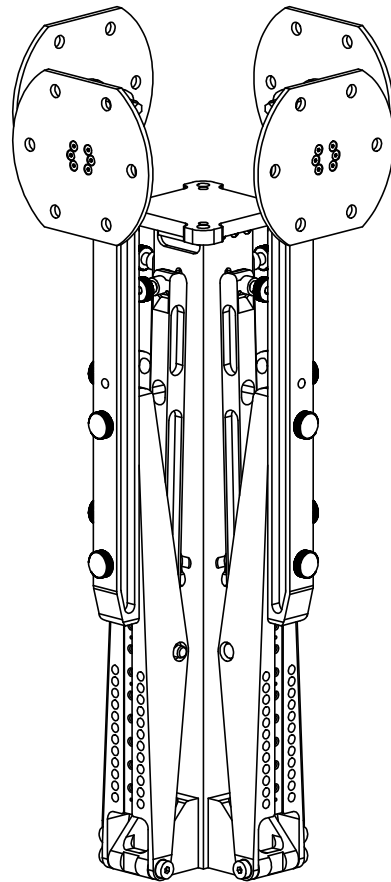
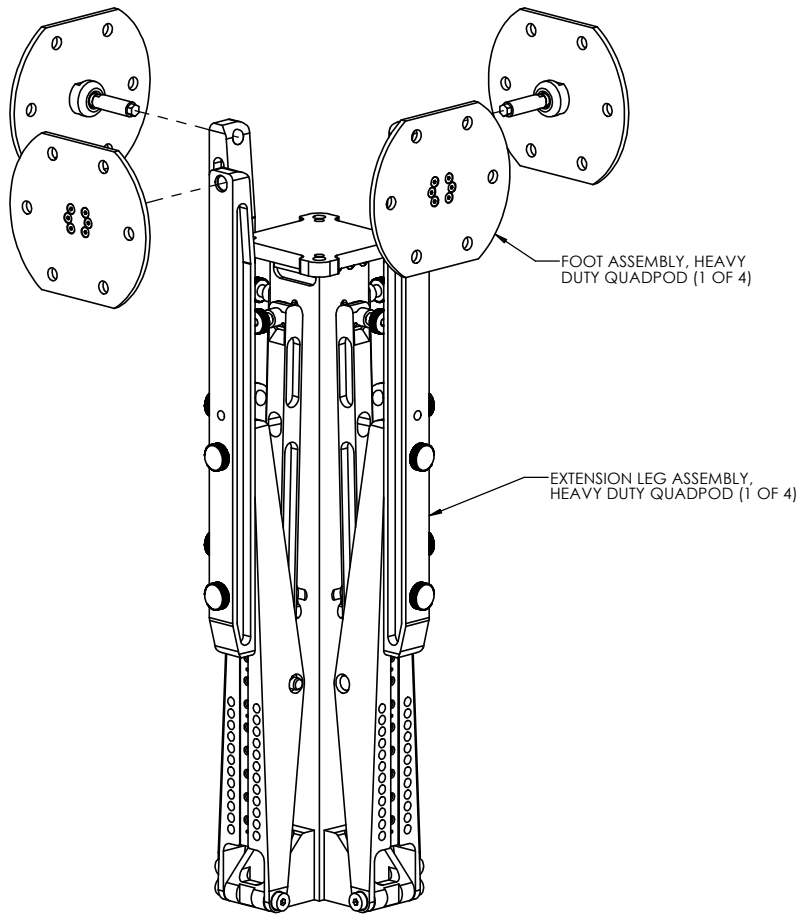
1/4-20 x 3/4 STAINLESS STEEL
SOCKET HEAD CAP SCREW (1 OF 4)



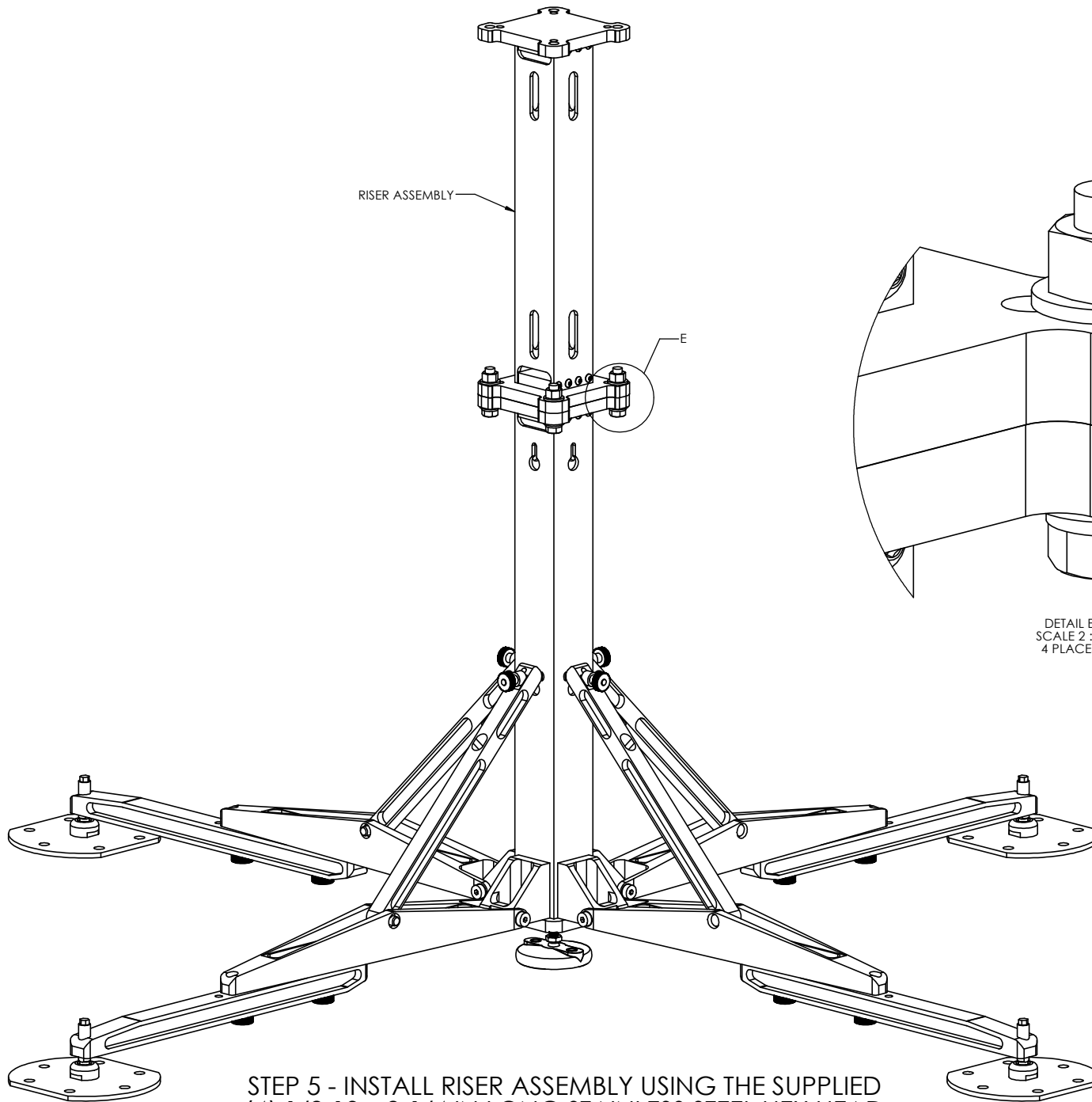
STEP 2 - ASSEMBLE MAST LEVELING ASSEMBLY USING THE
SUPPLIED (4) 1/4-20 x 3/4 IN LONG STAINLESS STEEL SOCKET
HEAD CAP SCREWS. TORQUE SCREWS TO 70 IN-LBS



STEP 3 - LOOSEN INDICATED THREADED KNOBS THEN SLIDE
 EXTENSION LEG ASSEMBLY INTO DOVETAIL GROOVE. TIGHTEN
 THREADED KNOBS AT DESIRED EXTENSION LEG ASSEMBLY POSITION

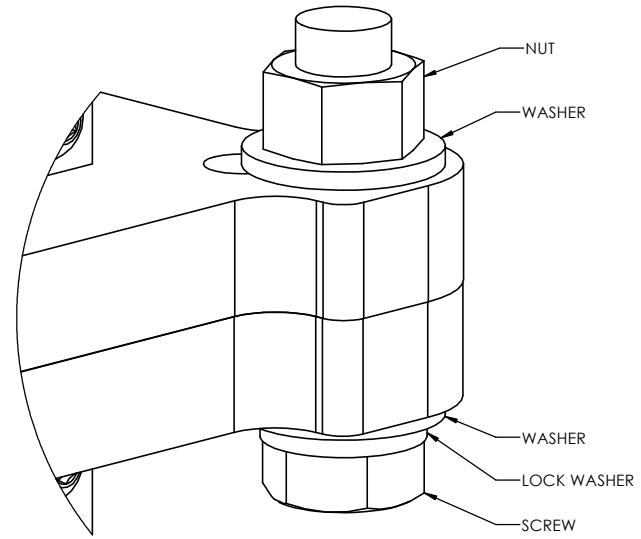


STEP 4 - INSTALL FOOT ASSEMBY (QTY-4) BY ROTATING THREADED SHAFT
CLOCKWISE INTO THREADED HOLE IN EXTENSION LEG ASSEMBLY



RISER ASSEMBLY

E



NUT

WASHER

WASHER

LOCK WASHER

SCREW

DETAIL E
SCALE 2 : 1
4 PLACES

STEP 5 - INSTALL RISER ASSEMBLY USING THE SUPPLIED
(4) 1/2-13 x 2-1/4 IN LONG STAINLESS STEEL HEX HEAD
CAP SCREWS AND CORRESPONDING WASHERS, LOCK
WASHERS AND NUTS. TORQUE SCRES TO 45 FT-LBS