

1 - 18 GHz Linearly Polarised Wideband Horn Antenna fitted with a N type Connector and Radome with Horn Mount suitable for a Tripod

Catalogue number **QWH-SL-1-18-N-R & QFM-H-T**

Steatite reference **QMS-00979**

Contents **Summary**
Typical Gain / Antenna Factor
Typical Beamwidth / Patterns

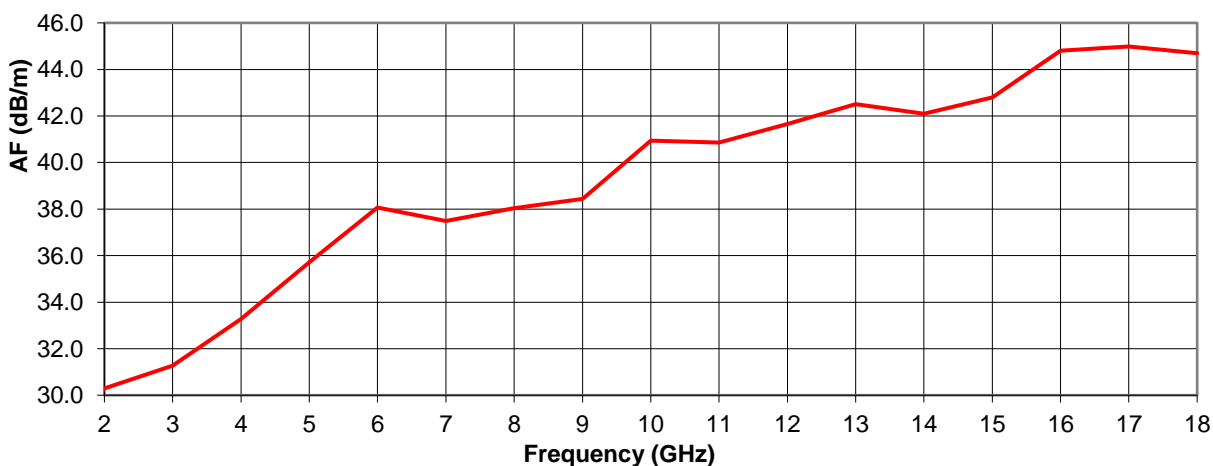
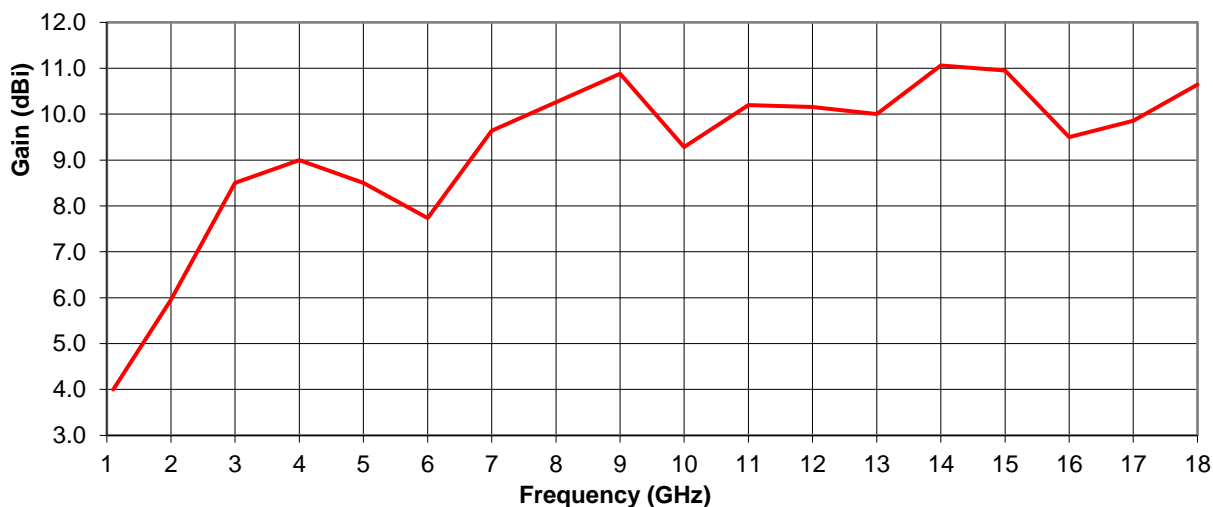


Typical Specification

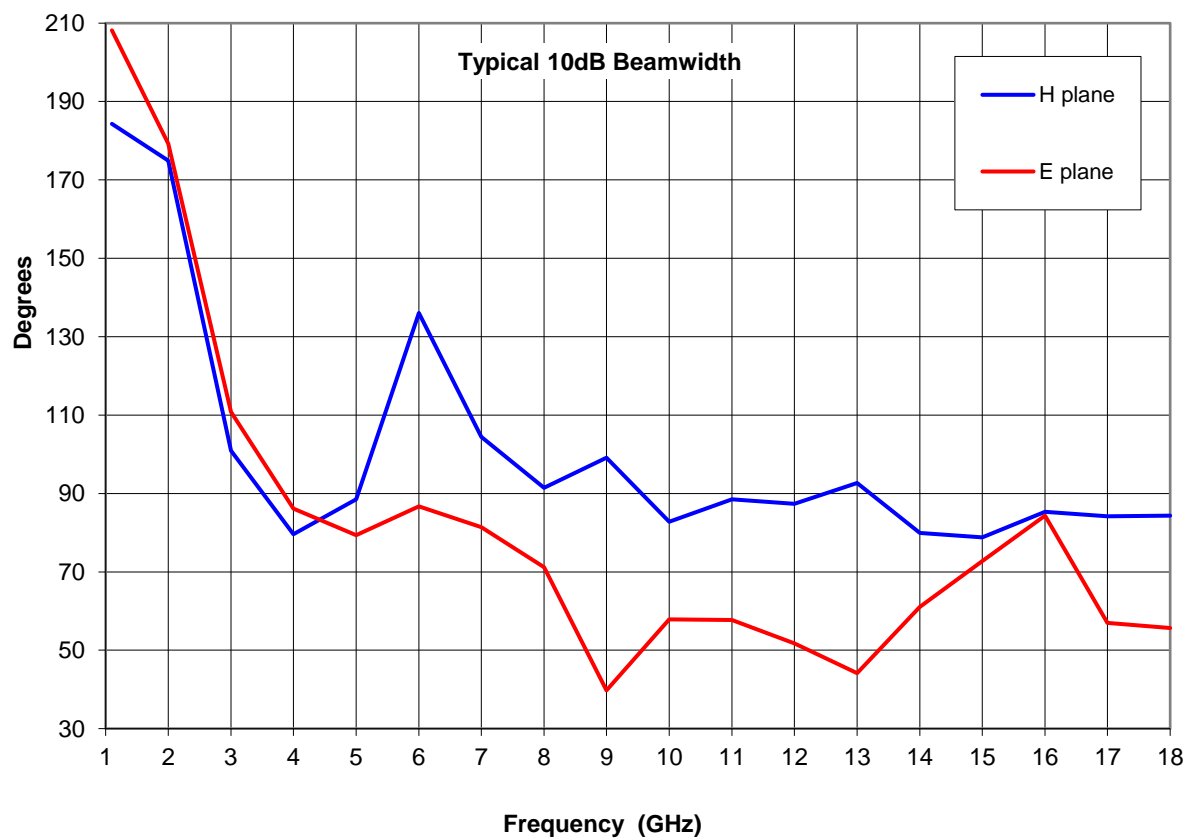
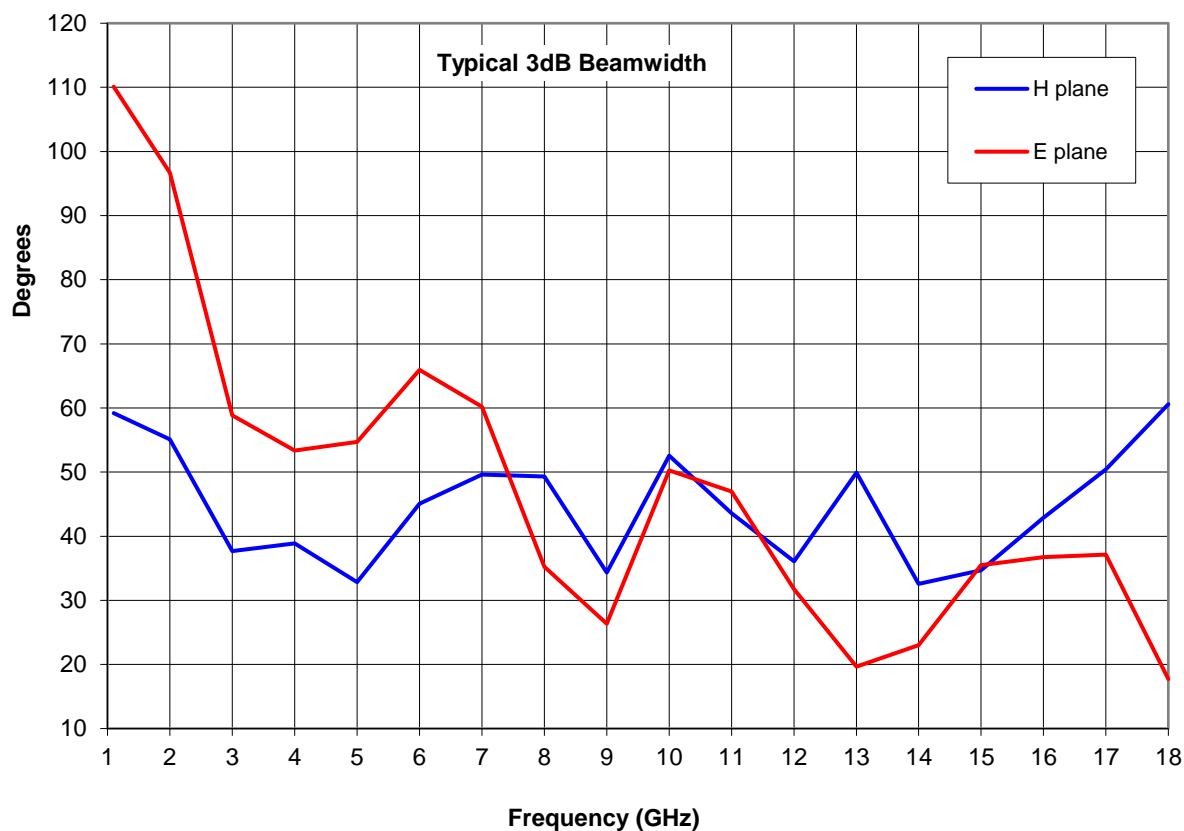
Frequency	1 to 18 GHz
Connector Type	SMA type jack
Power Handling	40 Watt c.w.
VSWR	Typically < 2:1
Gain	4 to 11.1 dBi
Antenna Factor	27.1 to 45 dB/m
3dB Beamwidth	18 to 110 degrees
10dB Beamwidth	40 to 208 degrees
Weight	2.3 kg nominal
Maximum Size	185 mm length x Ø179 mm (excluding mounting bracket)
Mounting	Either 1/4-20 UNC Tripod Mount Bracket or 8 x Ø6.2 mm Thru on a Ø165 mm PCD.
Construction	Aluminium Horn Antenna and Baseplate with a Dielectric Radome

Typical Antenna Gain / Factor

This is calculated by reference to standard gain horn antennas, and cross checked with reference to the antenna beamwidth, with an estimated error of +/- 0.8dB.

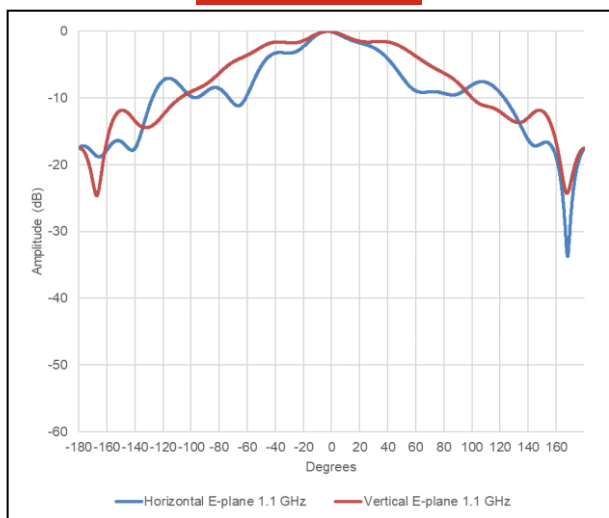


Typical Beamwidth

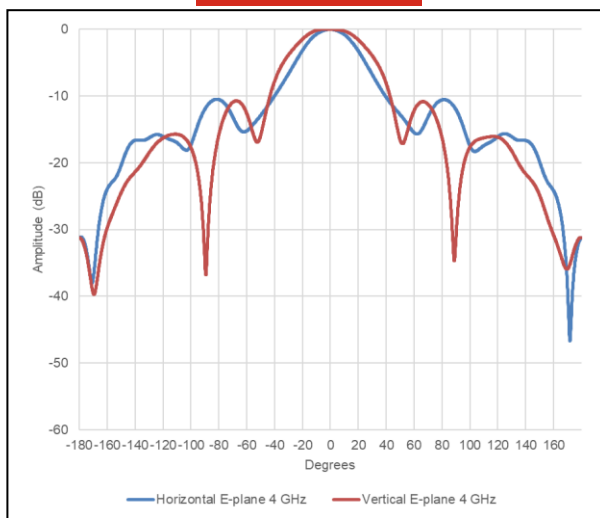


Typical Radiation Patterns

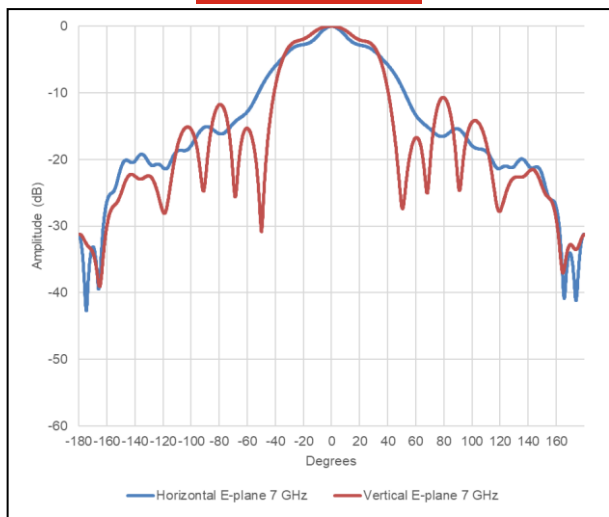
1.1 GHz



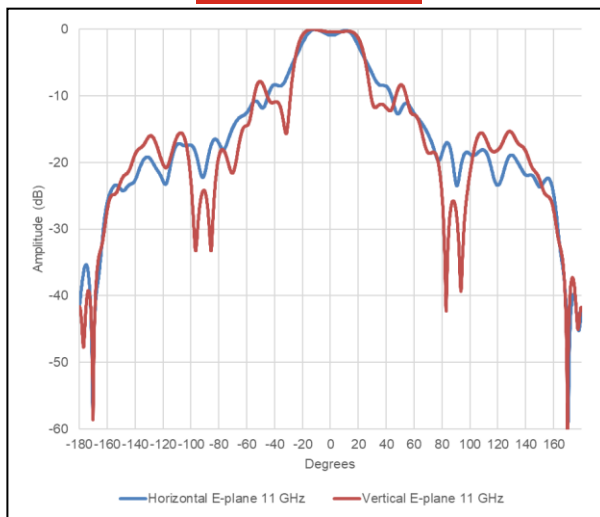
4 GHz



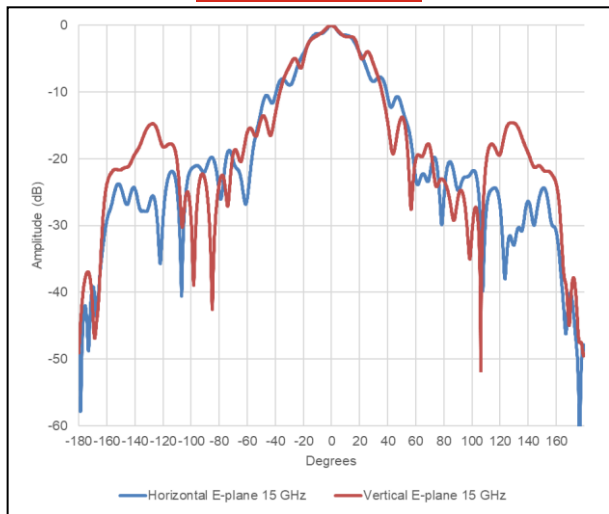
7 GHz



11 GHz



15 GHz



18 GHz

