

REV	DESCRIPTION	DATE	APPROVED
C	CN600564	2018-08-06	CLC

NOTES: UNLESS OTHERWISE SPECIFIED

- QPAR LINKALIGN-60EBP-10 CONFIGURABLE OPTIONS PER TABLE I. PART NUMBER GLA-60EBP-10-100 SHOWN THROUGHOUT THIS DRAWING. PoE CABLE SHOWN NOT TO SCALE
- USE INTERFACE CONTROL DRAWING IN CONJUNCTION WITH DATASHEET N500131
- 48 - 56VDC POWER SUPPLY INCLUDED WITH POSITIONER. NOT SHOWN IN DRAWING
- HARD COAT ANODIZE ALUMINUM CONSTRUCTION WITH STAINLESS STEEL HARDWARE
- 60° (+/-30°) AZIMUTH TRAVEL WITH 0.4°/SEC DRIVE RATE (NO LOAD)
- 60° (+/-30°) ELEVATION TRAVEL WITH 0.4°/SEC DRIVE RATE (NO LOAD). POSITIONER CAN BE MOUNTED ON EITHER SIDE OF THE MAST. SOFTWARE FEATURES ALLOW FOR THE ELEVATION DIRECTION TO BE REVERSED
- 22° TO 140°F (-30° TO 60°C) OPERATIONAL TEMPERATURE RANGE. -40 TO 158°F (-40 TO 70°C) NON-OPERATIONAL TEMPERATURE RANGE
- 0.01° FEEDBACK RESOLUTION IN BOTH AXES
- AZIMUTH / ELEVATION BACKLASH LESS THAN 0.1°
- ENVELOPE DIMENSIONS WHEN MOUNTED TO A 4.5" O.D. MAST ARE 11.81" (30.0 cm) HIGH X 15.11" (38.4 cm) WIDE X 10.25" (26.0 cm) DEEP. DIMENSIONS APPLY WHEN POSITIONER IS AT 0° AZIMUTH AND 0° ELEVATION ANGLES
- WEIGHT APPROXIMATELY 40 LBS (18.1 kg) NOT INCLUDING PoE CABLE
- CENTER OF GRAVITY 5.2" (13.2 cm) IN THE X-DIRECTION, 0.9" (2.3 cm) IN THE Y-DIRECTION AND 0" IN THE Z-DIRECTION MEASURED FROM THE CORRESPONDING DATUM A, B, OR C
- POSITIONER CLAMPS TO 3" - 4.5" OUTSIDE DIAMETER MAST (NOT INCLUDED). 4.5" O.D. MAST SHOWN THROUGHOUT THIS DRAWING
- TORQUE THE INDICATED POSITIONER CLAMP FASTENERS (3/8-16 X 4.5" LONG STAINLESS STEEL HEX HEAD SCREWS) TO 236 IN-LBS OR 20 FT-LBS
- PAYLOAD SHALL NOT EXCEED 100 LBS OR 50 FT-LBS OF OPERATIONAL TORQUE ABOUT THE AZIMUTH OR ELEVATION AXIS NOTED BY DATUM C AND B RESPECTIVELY
- NON-OPERATIONAL WIND LOADING TORQUE SHALL NOT EXCEED 200 FT-LBS ON THE AZIMUTH OR ELEVATION AXIS NOTED BY DATUM C AND B RESPECTIVELY
- ANTENNA MOUNTING PLATE VARIES TO SUPPORT ANTENNA PAYLOADS LISTED IN TABLE I. CUSTOM CONFIGURATIONS ARE ALSO AVAILABLE UPON REQUEST
- TORQUE ANTENNA MOUNTING HARDWARE (5/16-18 X 1" LONG STAINLESS STEEL HEX HEAD SCREWS) TO 132 IN-LBS OR 11 FT-LBS

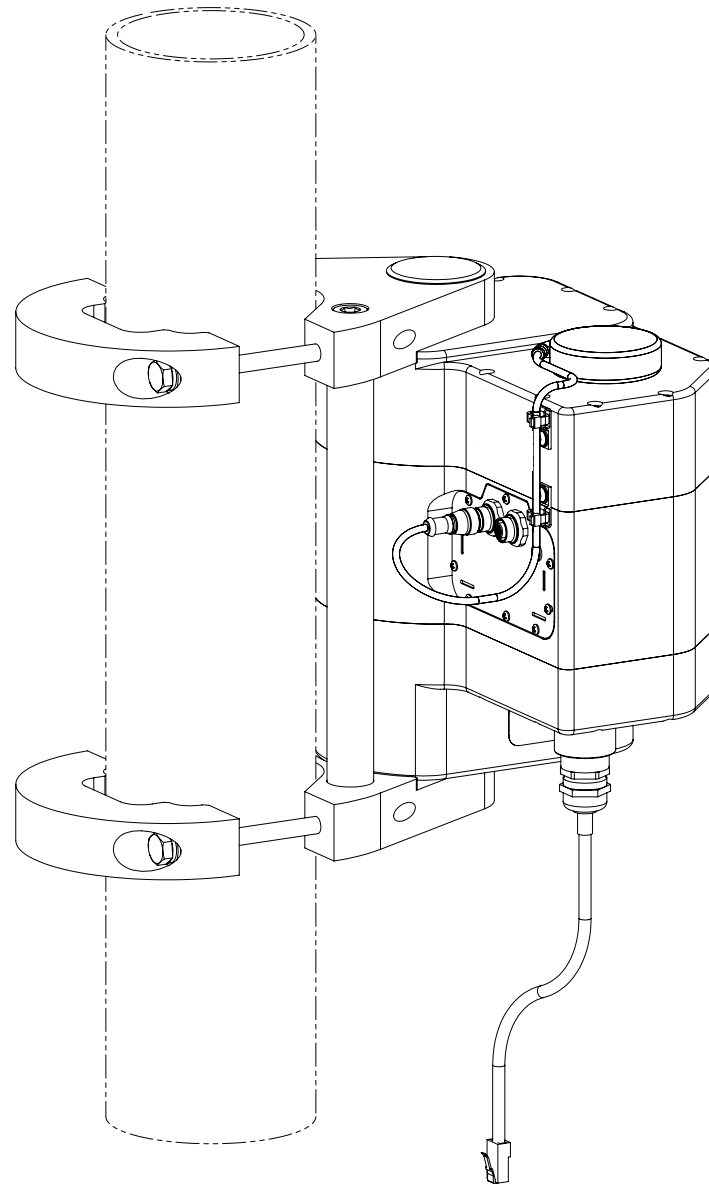
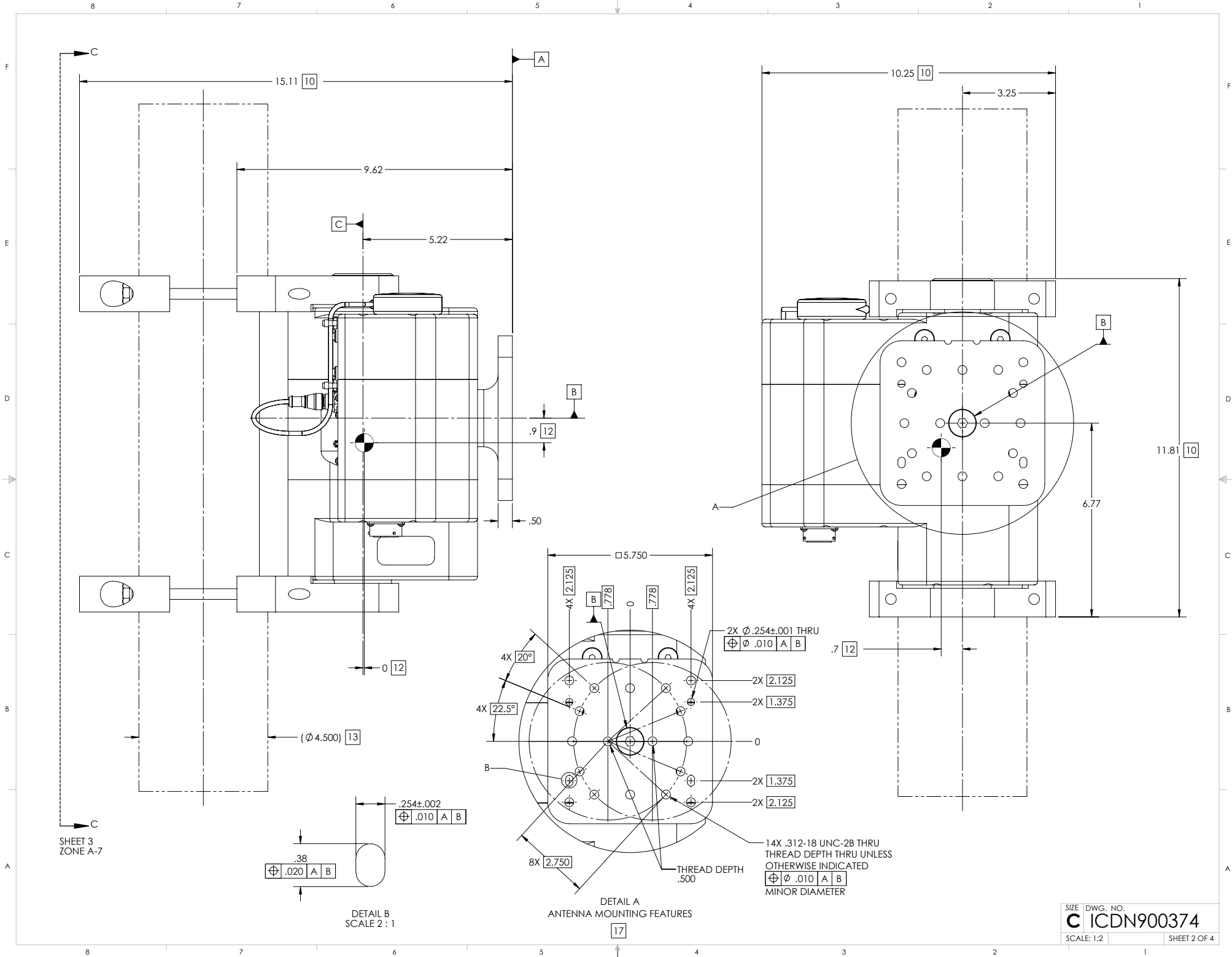


TABLE I	
BUILDING A PART NUMBER	STANDARD OPTIONS
LA-60EBP - 10 - 100	<<EXAMPLE
SHIELDED ETHERNET CABLE STANDARD LENGTHS	
	050 = 50 ft
	100 = 100 ft
	150 = 150 ft
	200 = 200 ft
	250 = 250 ft
	300 = 300 ft
	XXX = Custom length in feet
	XXXC = Add 'C' to end of cable length for unterminated mating connector
CUSTOM CONFIGURATION	
	= Standard options - leave blank
MOTOR DRIVES AND PAYLOAD	
	10 = Az 50 ft-lbs @ 0.4°/s, El 50 ft-lbs @ 0.4°/s, 100 lb payload. Typically paired with 1-2 ft side arm mount antenna
MODEL	
	LA-60EBP = LinkAlign-60EBP (+/-30° azimuth, +/-30° elevation)

SYMBOL KEY		UNLESS OTHERWISE SPECIFIED:		DRAWN	S. CHEYNE	2014-04-08	QPAR ANTENNAS USA, LLC
<input type="checkbox"/>	NOTE	<input type="checkbox"/>	PL ITEMS	CHECKED	C. CHEYNE	2018-08-06	
PROPRIETARY AND CONFIDENTIAL		DIMENSIONS ARE IN INCHES		ME APPR.	S. CHEYNE	2014-04-08	
THE INFORMATION CONTAINED IN THIS DRAWING IS THE SOLE PROPERTY OF QPAR USA. ANY REPRODUCTION IN PART OR AS A WHOLE WITHOUT THE WRITTEN PERMISSION OF QPAR ANTENNAS USA IS PROHIBITED.		TOLERANCES ANGLE ± .5 DEGREES TWO PLACE DECIMAL ± .030 THREE PLACE DECIMAL ± .010		INTERPRET DIM AND TOL PER ASME Y14.5M - 1994		TITLE: QPAR LINKALIGN-60EBP-10 INTERFACE CONTROL DRAWING	
THIRD ANGLE PROJECTION		PART NO.		SIZE		DWG. NO.	
DO NOT SCALE DRAWING		SEE TABLE I		C		ICN900374	
QPAR ANTENNAS USA, LLC San Diego, CA 92020 www.qparusa.com		SCALE: 1:2		REV		C	
		SHEET 1 OF 4					



SHEET 3
ZONE A-7

INTERCONNECT FOR SERIAL / OPTIONAL PELCO-D JOYSTICK INTERFACE

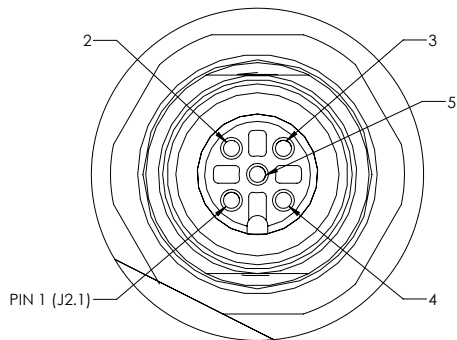
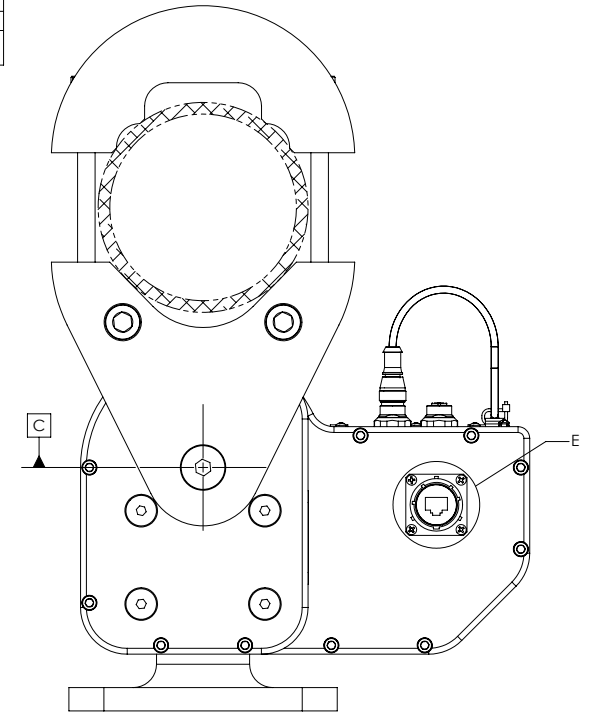


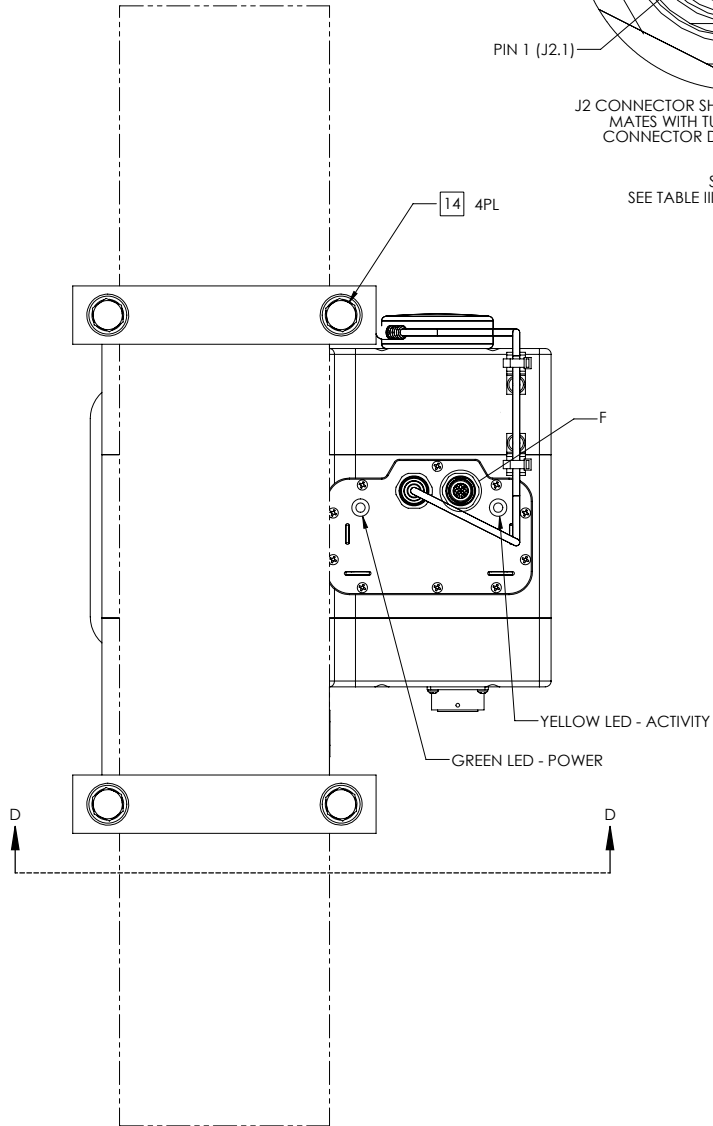
TABLE III (SERIAL CONNECTOR)	
CONNECTOR DESIGNATION	FUNCTION
J2.1	DC RETURN FOR QPARUSA JOYSTICK
J2.2	NOT USED
J2.3	(B) TxD-/RxD- DATA LINE
J2.4	(A) TxD+/RxD+ DATA LINE
J2.5	DC POWER FOR QPARUSA JOYSTICK

J2 CONNECTOR SHOWN FROM MATING SIDE
MATES WITH TURCK P/N 8151-0/PG9
CONNECTOR DUST CAP NOT SHOWN

DETAIL F
SCALE 4 : 1
SEE TABLE III FOR PINOUT DETAILS

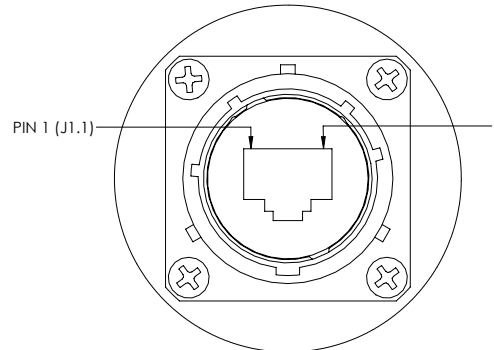


SECTION D-D



VIEW C-C
SHEET 2
ZONE A-8

INTERCONNECT FOR POSITIONER PoE



J1 CONNECTOR SHOWN FROM MATING SIDE
MATES WITH AMPHENOL P/N - RJF6B

DETAIL E
SCALE 2 : 1
SEE TABLE II FOR PINOUT DETAILS

TABLE II (PoE CONNECTOR)	
CONNECTOR DESIGNATION	FUNCTION
J1.1	DATA PAIR 1
J1.2	DATA PAIR 1
J1.3	DATA PAIR 2
J1.4	+48-56VDC PoE POWER INPUT
J1.5	+48-56VDC PoE POWER INPUT
J1.6	DATA PAIR 2
J1.7	DC RETURN FOR PoE INPUT
J1.8	DC RETURN FOR PoE INPUT

