

REV	DESCRIPTION	DATE	APPROVED
C	CN600564	2018-08-06	CLC

NOTES: UNLESS OTHERWISE SPECIFIED

1. QPAR LINKALIGN-60EBP-30 CONFIGURABLE OPTIONS PER TABLE I. PART NUMBER QLA-60EBP-30-100 SHOWN THROUGHOUT THIS DRAWING. PoE CABLE SHOWN IS NOT SHOWN
2. USE INTERFACE CONTROL DRAWING IN CONJUNCTION WITH DATASHEET N500145
3. 48 - 56VDC POWER SUPPLY INCLUDED WITH POSITIONER. NOT SHOWN IN DRAWING
4. HARD COAT ANODIZE ALUMINUM CONSTRUCTION WITH STAINLESS STEEL HARDWARE
5. 60° (+/-30°) AZIMUTH TRAVEL WITH 0.47°/SEC DRIVE RATE (NO LOAD)
6. 60° (+/-30°) ELEVATION TRAVEL WITH 0.47°/SEC DRIVE RATE (NO LOAD). POSITIONER CAN BE MOUNTED ON EITHER SIDE OF THE MAST. SOFTWARE FEATURES ALLOW FOR THE ELEVATION DIRECTION TO BE REVERSED
7. -22° TO 140°F (-30° TO 60°C) OPERATIONAL TEMPERATURE RANGE. -40 TO 158°F (-40 TO 70°C) NON-OPERATIONAL TEMPERATURE RANGE
8. 0.01° FEEDBACK RESOLUTION IN BOTH AXES
9. AZIMUTH AND ELEVATION BACKLASH LESS THAN 0.03°
10. ENVELOPE DIMENSIONS WHEN MOUNTED TO A 4.5" O.D. MAST ARE 20.58" (52.3 cm) HIGH X 13.85" (35.2 cm) WIDE X 16.69" (42.4 cm) DEEP. DIMENSIONS APPLY WHEN POSITIONER IS AT 0° AZIMUTH AND 0° ELEVATION ANGLES
11. WEIGHT APPROXIMATELY 100.0 LBS (45.4 kg) NOT INCLUDING PoE CABLE
12. CENTER OF GRAVITY 7.1" (18.0 cm) IN THE X-DIRECTION, 0.1" (0.3 cm) IN THE Y-DIRECTION AND 0.6" (1.5 cm) IN THE Z-DIRECTION FROM THE CORRESPONDING DATUM A, B, OR C
13. POSITIONER CLAMPS TO 3" - 4.5" OUTSIDE DIAMETER MAST (NOT INCLUDED). 4.5" O.D. MAST SHOWN THROUGHOUT THIS DRAWING
14. TORQUE THE INDICATED POSITIONER CLAMP FASTENERS (1/2-13 X 5.0" LONG STAINLESS STEEL HEX HEAD SCREWS) TO 45 FT-LBS
15. PAYLOAD SHALL NOT EXCEED 300 LBS OR 150 FT-LBS OF OPERATIONAL TORQUE ABOUT THE AZIMUTH OR ELEVATION AXIS NOTED BY DATUM C AND B RESPECTIVELY
16. NON-OPERATIONAL WIND LOADING TORQUE SHALL NOT EXCEED 1500 FT-LBS ON THE AZIMUTH OR ELEVATION AXIS NOTED BY DATUM C AND B RESPECTIVELY
17. ANTENNA MOUNTING PLATE VARIES TO SUPPORT ANTENNA PAYLOADS LISTED IN TABLE I. CUSTOM CONFIGURATIONS ARE ALSO AVAILABLE UPON REQUEST
18. TORQUE ANTENNA MOUNTING HARDWARE (5/8-11 X 1.5" LONG STAINLESS STEEL HEX HEAD SCREWS) TO 150 FT-LB

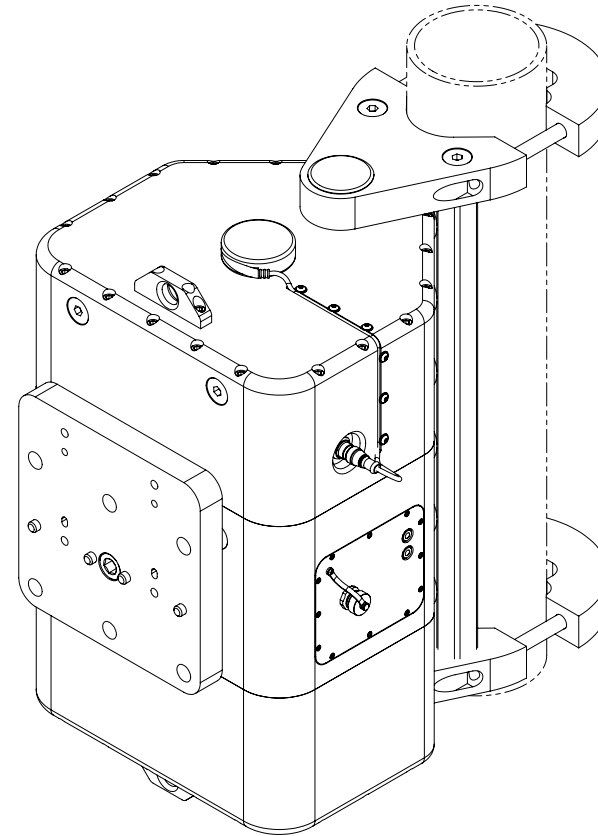
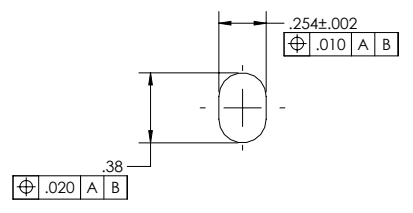
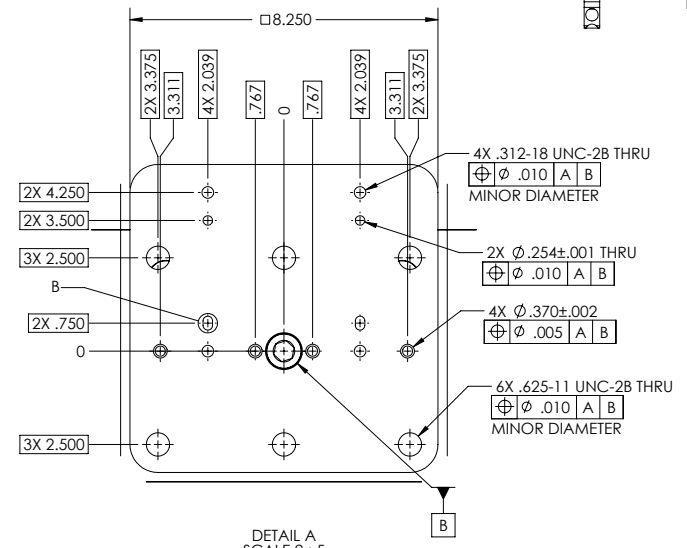
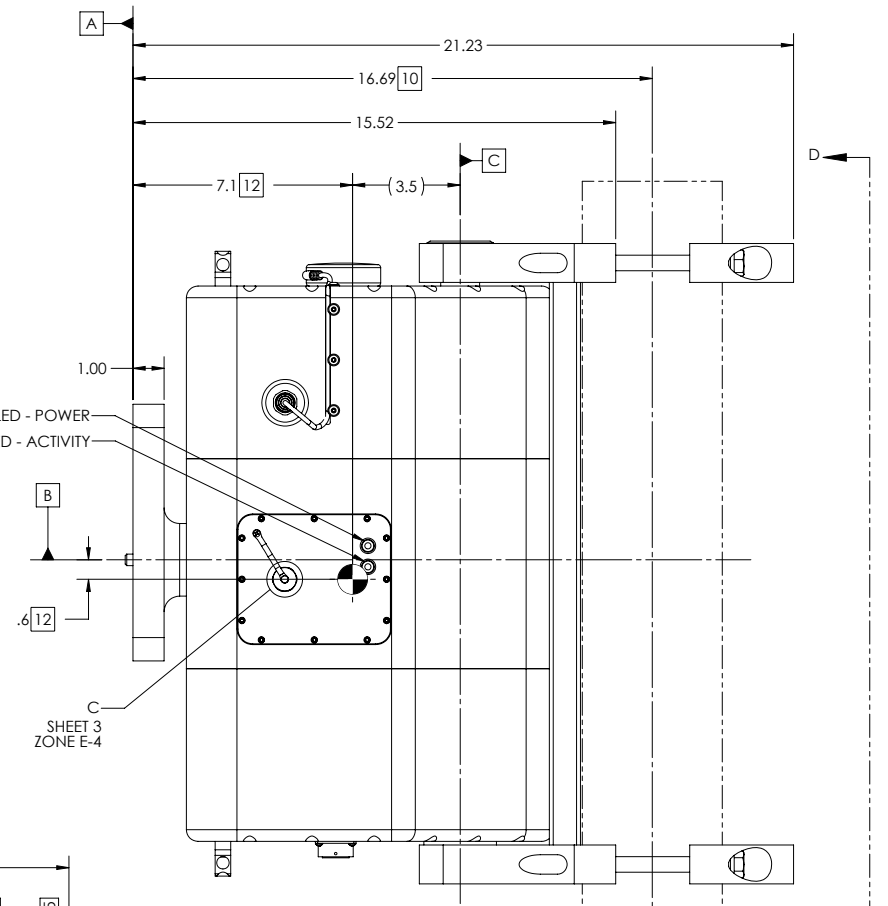
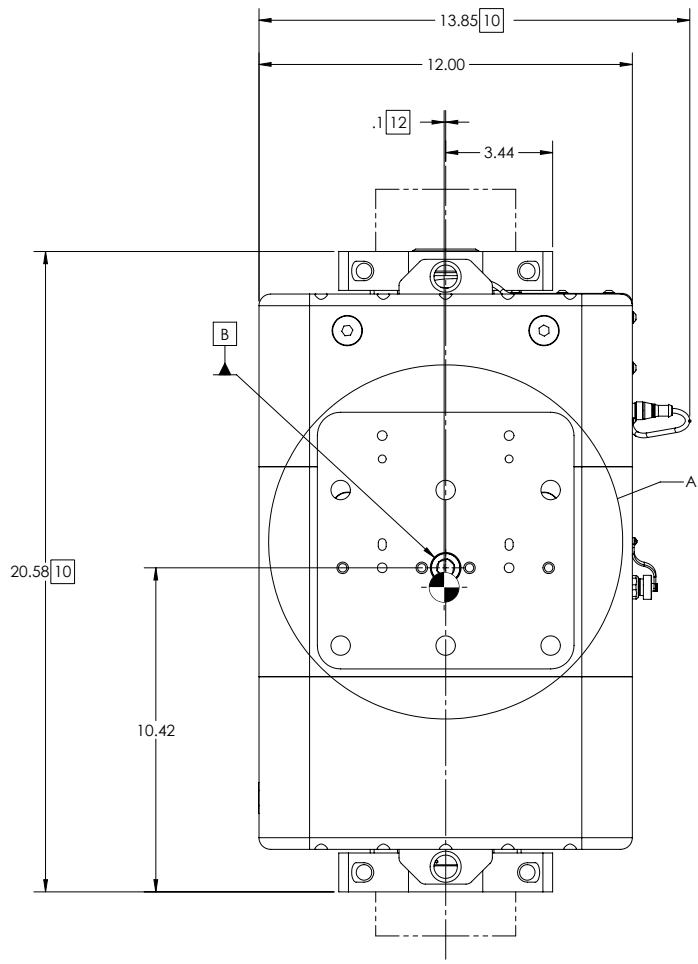
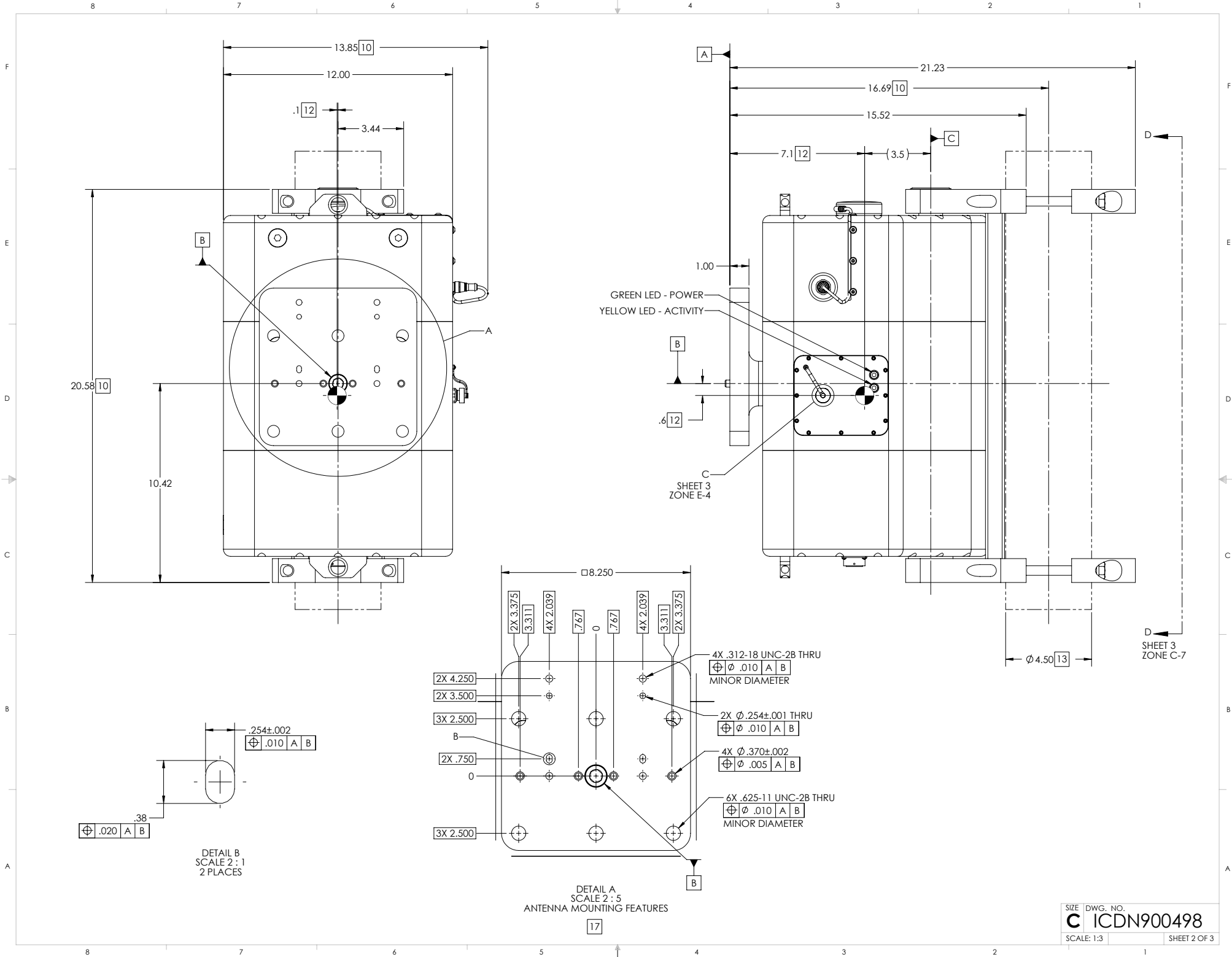


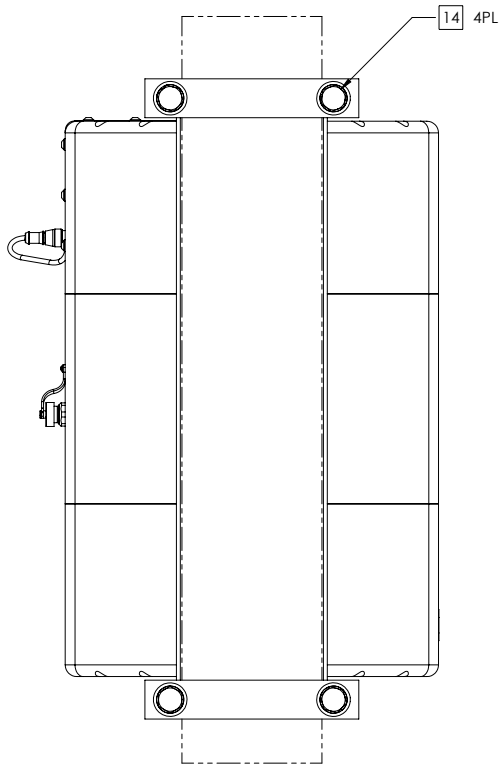
TABLE I	
BUILDING A PART NUMBER	STANDARD OPTIONS
LA-60EBP - 30 - 100	<<EXAMPLE
	<b>SHIELDED ETHERNET CABLE STANDARD LENGTHS</b>
	050 = 50 ft
	100 = 100 ft
	150 = 150 ft
	200 = 200 ft
	250 = 250 ft
	300 = 300 ft
	XXX = Custom length in feet
	XXXC = Add "C" to end of cable length for unterminated mating connector
	<b>CUSTOM CONFIGURATION</b>
	= Standard options - leave blank
	<b>MOTOR DRIVES AND PAYLOAD</b>
	30 = Az 100 ft-lbs @ 0.1°/s, El 100 ft-lbs @ 0.1°/s, 200 lb payload. Typically paired with 3 ft side arm mount antenna
	<b>MODEL</b>
	LA-60EBP = LinkAlign-60EBP (+/-30° azimuth, +/-30° elevation)

<b>SYMBOL KEY</b> <input type="checkbox"/> NOTE <input type="checkbox"/> PL ITEMS  <b>PROPRIETARY AND CONFIDENTIAL</b> THE INFORMATION CONTAINED IN THIS DRAWING IS THE SOLE PROPERTY OF QPAR/USA. ANY REPRODUCTION IN PART OR AS A WHOLE WITHOUT THE WRITTEN PERMISSION OF QPAR ANTENNAS USA IS PROHIBITED.  QPAR ANTENNAS USA 11 C San Diego, CA 92020 www.qparusa.com	<b>UNLESS OTHERWISE SPECIFIED:</b> DIMENSIONS ARE IN INCHES TOLERANCES: ANGLE ± .5 DEGREES TWO PLACE DECIMAL ± .030 THREE PLACE DECIMAL ± .010  INTERPRET DIM AND TOL PER ASME Y14.5M - 1994  <b>THIRD ANGLE PROJECTION</b> DO NOT SCALE DRAWING	DRAWN C. CHEYNE 2018-05-01 CHECKED S. CHEYNE 2018-05-01 ME APPR. C. CHEYNE 2018-05-01 EE APPR.	QPAR ANTENNAS USA, LLC TITLE: QPAR LINKALIGN-60EBP-30 INTERFACE CONTROL DRAWING SIZE DWG. NO. C ICDN900498 SCALE: 1:3	REV C SHEET 1 OF 3
	PART NO. SEE TABLE I	QPAR ANTENNAS USA, LLC	QPAR ANTENNAS USA, LLC	QPAR ANTENNAS USA, LLC
	QPAR ANTENNAS USA, LLC	QPAR ANTENNAS USA, LLC	QPAR ANTENNAS USA, LLC	QPAR ANTENNAS USA, LLC

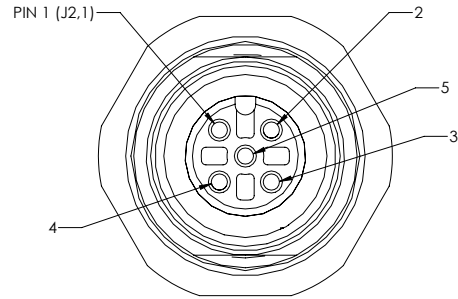


DETAIL B  
SCALE 2:1  
2 PLACES

DETAIL A  
SCALE 2:5  
ANTENNA MOUNTING FEATURES



VIEW D-D  
SHEET 2  
ZONE B-1

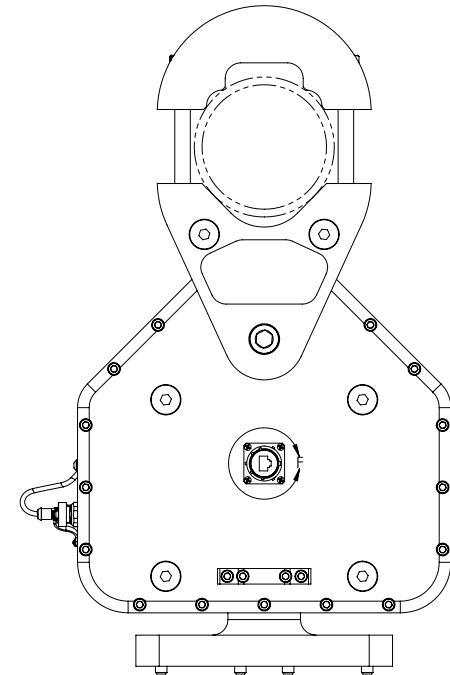


INTERCONNECT FOR SERIAL/OPTIONAL PELCO-D JOYSTICK INTERFACE

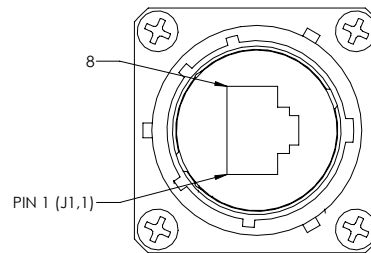
J2 CONNECTOR SHOWN FROM MATING SIDE  
MATES WITH TURCK P/N 8151-0/PG9  
CONNECTOR DUST CAP NOT SHOWN

DETAIL C  
SCALE 4 : 1  
SHEET 2  
ZONE C-4  
SEE TABLE III FOR PINOUT DETAILS  
SCALE 4 : 1

TABLE III (SERIAL CONNECTOR)	
CONNECTOR DESIGNATION	FUNCTION
J2.1	DC RETURN FOR QPARUSA JOYSTICK
J2.2	NOT USED
J2.3	(B) TxD-/RxD- DATA LINE
J2.4	(A) TxD+/RxD+ DATA LINE
J2.5	DC POWER FOR QPARUSA JOYSTICK



VIEW E-E



INTERCONNECT FOR POSITIONER PoE  
J1 CONNECTOR SHOWN FROM MATING SIDE  
MATES WITH AMPHENOL P/N - RJF6B

DETAIL F  
SCALE 2 : 1  
SEE TABLE II FOR PINOUT DETAILS

TABLE II (PoE CONNECTOR)	
CONNECTOR DESIGNATION	FUNCTION
J1.1	DATA PAIR 1
J1.2	DATA PAIR 1
J1.3	DATA PAIR 2
J1.4	+48-56VDC PoE POWER INPUT
J1.5	+48-56VDC PoE POWER INPUT
J1.6	DATA PAIR 2
J1.7	DC RETURN FOR PoE INPUT
J1.8	DC RETURN FOR PoE INPUT