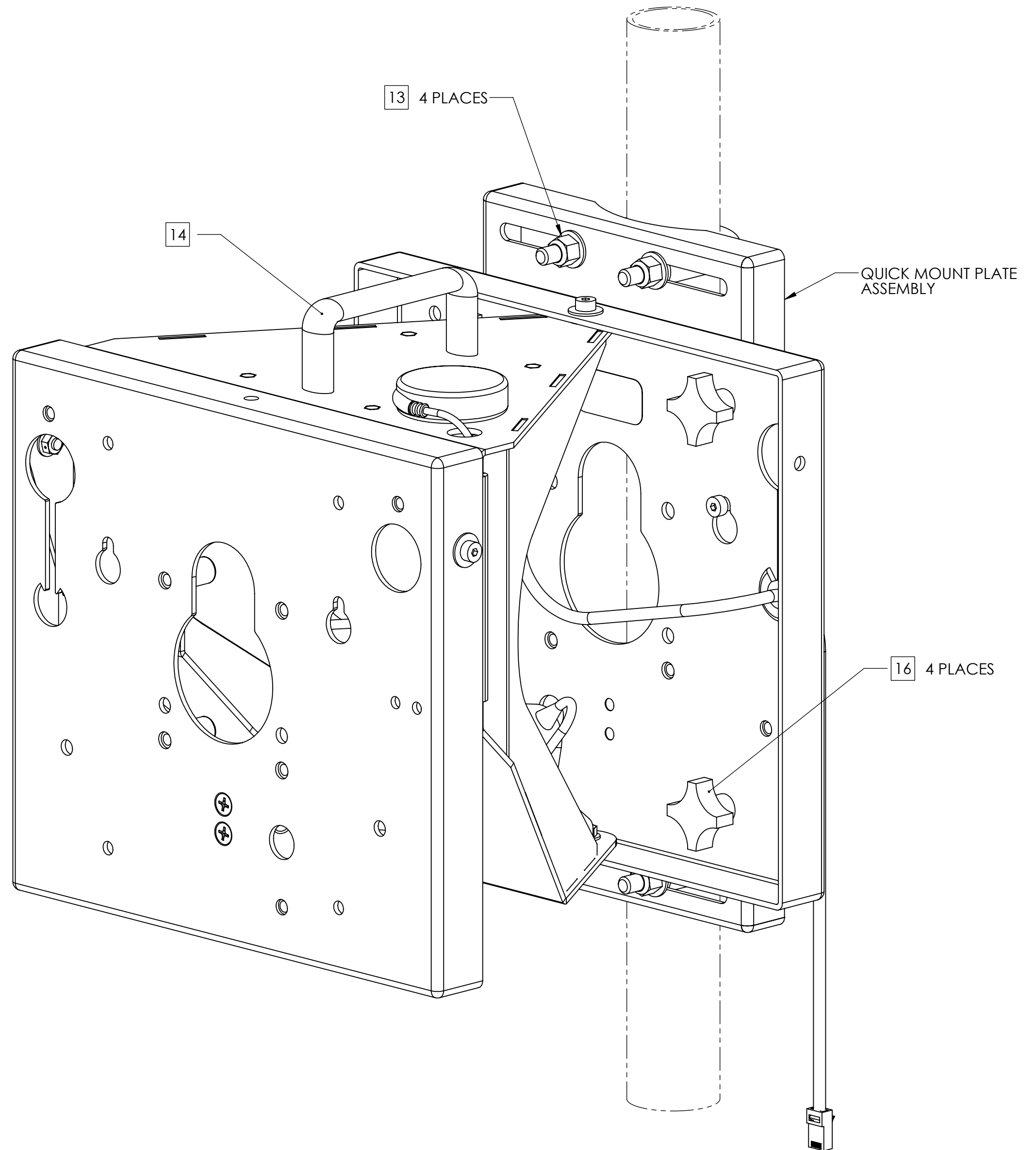


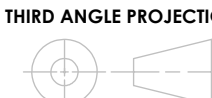
| REV | DESCRIPTION | DATE | APPROVED |
|-----|-------------|------------|----------|
| H | CN600594 | 2018-08-07 | CLC |

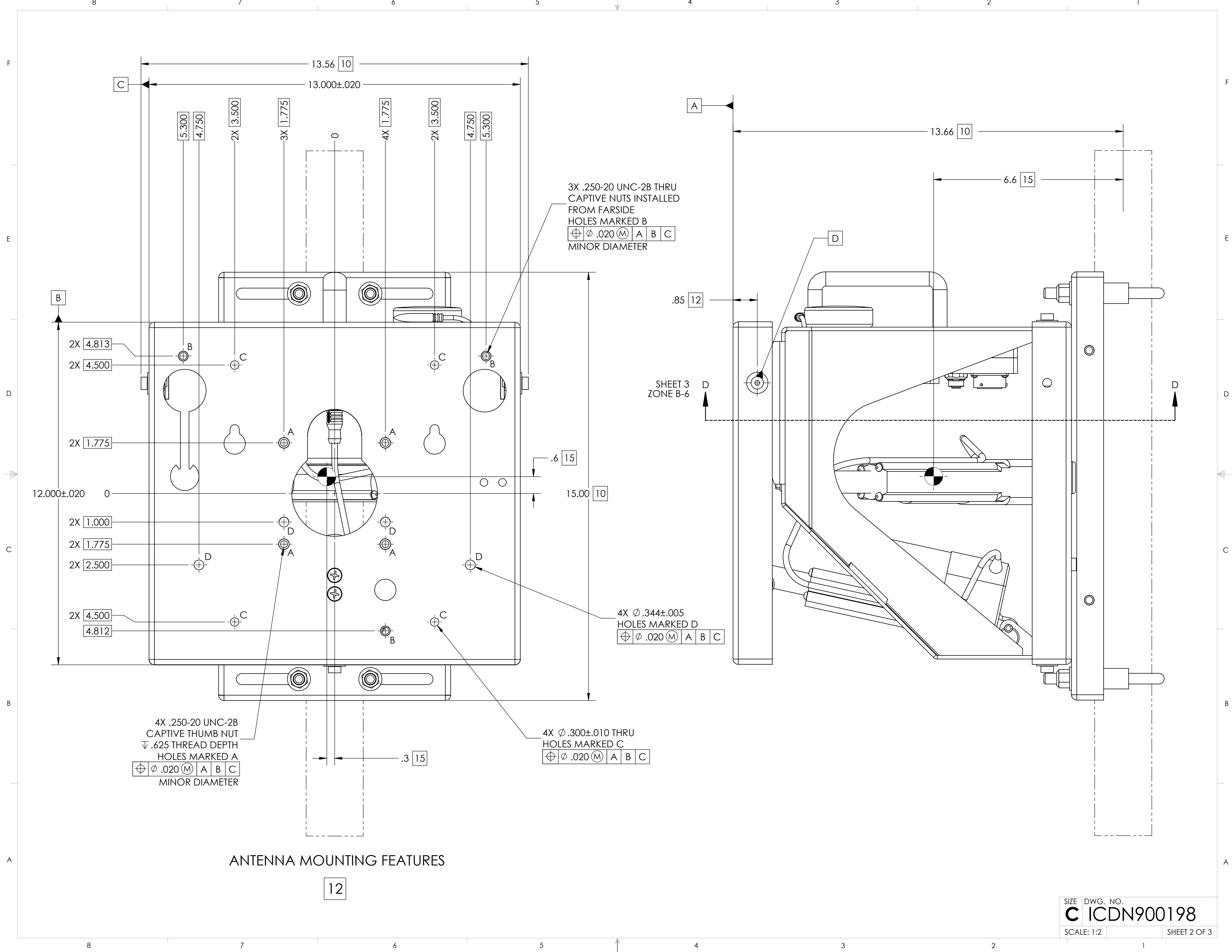
NOTES: UNLESS OTHERWISE SPECIFIED

- QPAR LINKALIGN-60LPT-10 CONFIGURABLE OPTIONS PER TABLE I. PART NUMBER QLA-60LPT-10-200-100 SHOWN THROUGHOUT THIS DRAWING. PoE CABLE SHOWN NOT TO SCALE
- USE INTERFACE CONTROL DRAWING IN CONJUNCTION WITH DATASHEET N500112
- 48-56VDC POWER SUPPLY INCLUDED WITH POSITIONER. NOT SHOWN IN DRAWING
- HARD COAT ANODIZE ALUMINUM CONSTRUCTION WITH STAINLESS STEEL HARDWARE
- 60° (+/-30°) AZIMUTH TRAVEL WITH 3.0°/SEC DRIVE RATE (NO LOAD)
- 15° (+/-7.5°) ELEVATION TRAVEL WITH 1.5°/SEC DRIVE RATE (NO LOAD)
- 22° TO 140°F (-30° TO 60°C) OPERATIONAL TEMPERATURE RANGE. -40 TO 158°F (-40 TO 70°C) NON-OPERATIONAL TEMPERATURE RANGE
- 0.1° FEEDBACK RESOLUTION IN ALL AXES
- AZIMUTH BACKLASH LESS THAN 2°. ELEVATION BACKLASH LESS THAN 1°
- 15.00" (38.1 cm) HIGH X 13.56" (34.4 cm) WIDE X 13.66" (34.7 cm) DEEP. DEPTH MEASURED TO CENTER OF 2.00" DIAMETER MOUNTING POLE
- WEIGHT APPROXIMATELY 16.0 LBS NOT INCLUDING PoE CABLE AND QUICK MOUNT PLATE ASSEMBLY. WEIGHT APPROXIMATELY 18.5 LBS INCLUDING QUICK MOUNT PLATE ASSEMBLY WITH 2.00" U-BOLTS
- PAYLOAD SHALL NOT EXCEED 20 LBS OR 20 FT-LBS OF TORQUE ABOUT THE ELEVATION AXIS. TO CALCULATE TORQUE, TAKE THE DISTANCE FROM THE PAYLOAD CENTER OF GRAVITY TO DATUM -D- IN FEET AND MULTIPLY BY THE PAYLOAD WEIGHT. SEVERAL ANTENNA BRACKET OPTIONS AVAILABLE THAT INTERFACE DIRECTLY WITH FEATURES SHOWN. GO TO www.qparusa.com TO LEARN MORE
- TORQUE INDICATED 3/8-16 NUTS TO 21 FT-LBS
- HANDLE MAY BE USED AS A LIFT POINT
- CENTER OF GRAVITY 0.3" (0.8 cm) IN THE X-DIRECTION, 0.7" (1.8 cm) IN THE Y-DIRECTION AND 6.7" (17.0 cm) IN THE Z-DIRECTION MEASURED FROM THE CENTER OF THE 2.00" DIAMETER MOUNTING POLE
- FOR PERMANENT INSTALLATIONS, IT IS RECOMMENDED THAT THE (4) INDICATED .250-20 THREADED KNOBS BE REPLACED WITH (4) 1/4-20 X .625" LONG STAINLESS STEEL HEX HEAD FASTENERS WITH CORRESPONDING WASHER AND LOCK WASHER. HARDWARE PROVIDED WITH UNIT. TORQUE TO 75 IN-LBS



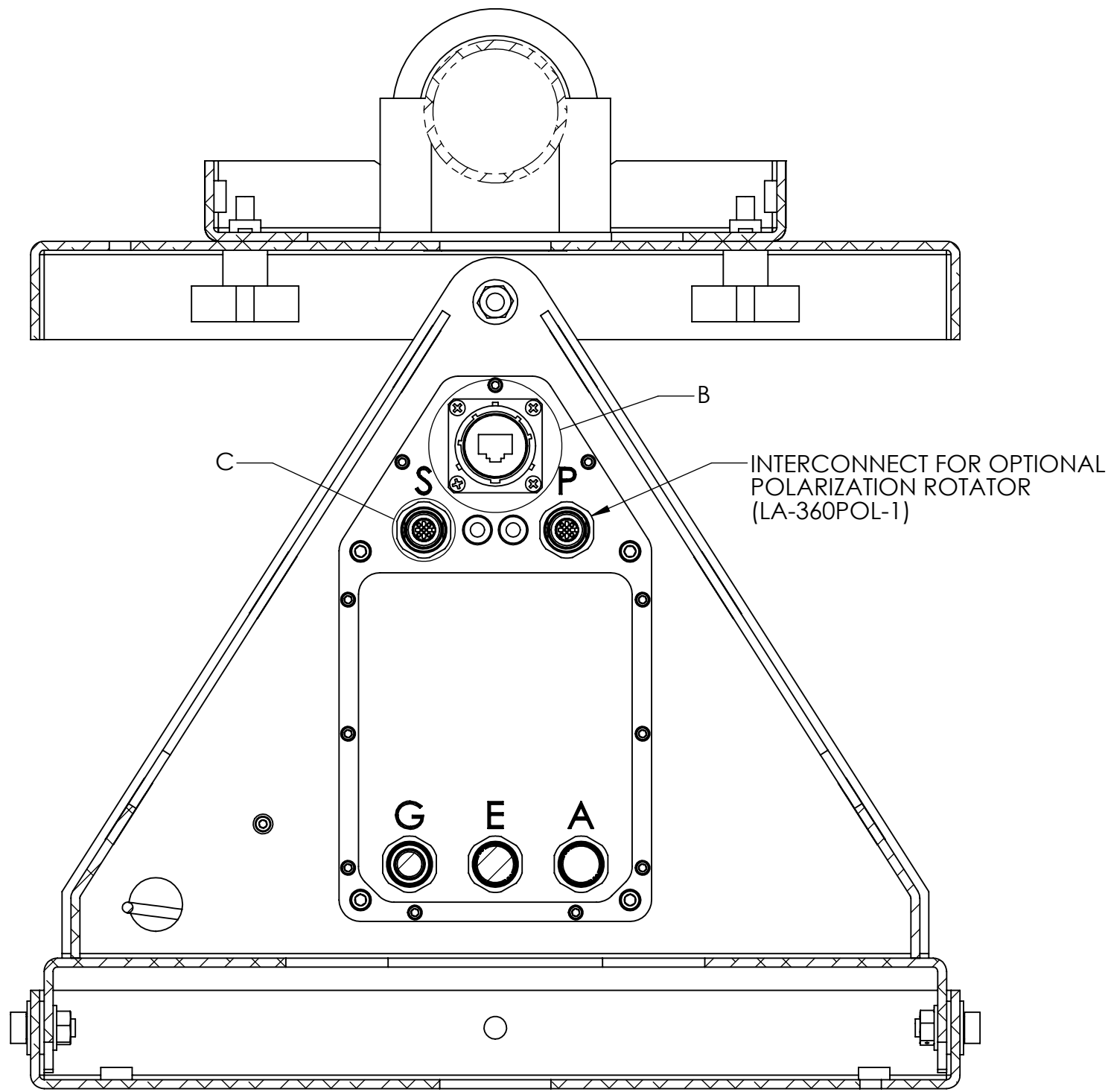
| TABLE I | |
|-----------------------------|--|
| BUILDING A PART NUMBER | STANDARD OPTIONS |
| LA-60LPT - 10 - - 200 - 100 | <<EXAMPLE |
| | SHIELDED ETHERNET CABLE STANDARD LENGTHS |
| | 050 = 50 ft |
| | 100 = 100 ft |
| | 150 = 150 ft |
| | 200 = 200 ft |
| | 250 = 250 ft |
| | 300 = 300 ft |
| | XXX = Custom length in feet |
| | XXXC = Add "C" to end of cable length for unterminated mating connector |
| | MOUNTING MAST O.D. |
| | 200 = 2.00 in |
| | 225 = 2.25 in |
| | 250 = 2.50 in |
| | 275 = 2.75 in |
| | 300 = 3.00 in |
| | 325 = 3.25 in |
| | 350 = 3.50 in |
| | 400 = 4.00 in |
| | 450 = 4.50 in |
| | 500 = 5.00 in |
| | 550 = 5.50 in |
| | 600 = 6.00 in |
| | CUSTOM CONFIGURATION |
| | = Standard options - leave blank |
| | MOTOR DRIVES AND PAYLOAD |
| | 10 = Az 20 ft-lbs @ 3°/s, El 40 ft-lbs @ 1.5°/s, 20 lb payload. Typically paired with 1-2 ft antenna |
| | MODEL |
| | LA-60LPT = LinkAlign-60LPT (+/-30° azimuth, +/-7.5° elevation) |

| | | | |
|---|--|---|---|
| SYMBOL KEY □ NOTE ○ PL ITEMS PROPRIETARY AND CONFIDENTIAL THE INFORMATION CONTAINED IN THIS DRAWING IS THE SOLE PROPERTY OF QPARUSA. ANY REPRODUCTION IN PART OR AS A WHOLE WITHOUT THE WRITTEN PERMISSION OF QPAR ANTENNAS USA IS PROHIBITED. QPAR ANTENNAS USA, LLC LAS VEGAS, NV 89121 www.qparusa.com | UNLESS OTHERWISE SPECIFIED: DIMENSIONS ARE IN INCHES TOLERANCES: ANGLE ± 5 DEGREES TWO PLACE DECIMAL ±.030 THREE PLACE DECIMAL ±.010 INTERPRET DIM AND TOL PER ASME Y14.5M - 1994 THIRD ANGLE PROJECTION  DO NOT SCALE DRAWING | DRAWN S. CHEYNE 2013-11-04 CHECKED C. CHEYNE 2013-11-04 ME APPR. S. CHEYNE 2013-11-04 EE APPR. | QPAR ANTENNAS USA, LLC TITLE: QPAR LINKALIGN-60LPT-10 INTERFACE CONTROL DRAWING |
| | | PART NO. SEE TABLE I | SIZE DWG. NO. REV C ICDN900198 H |

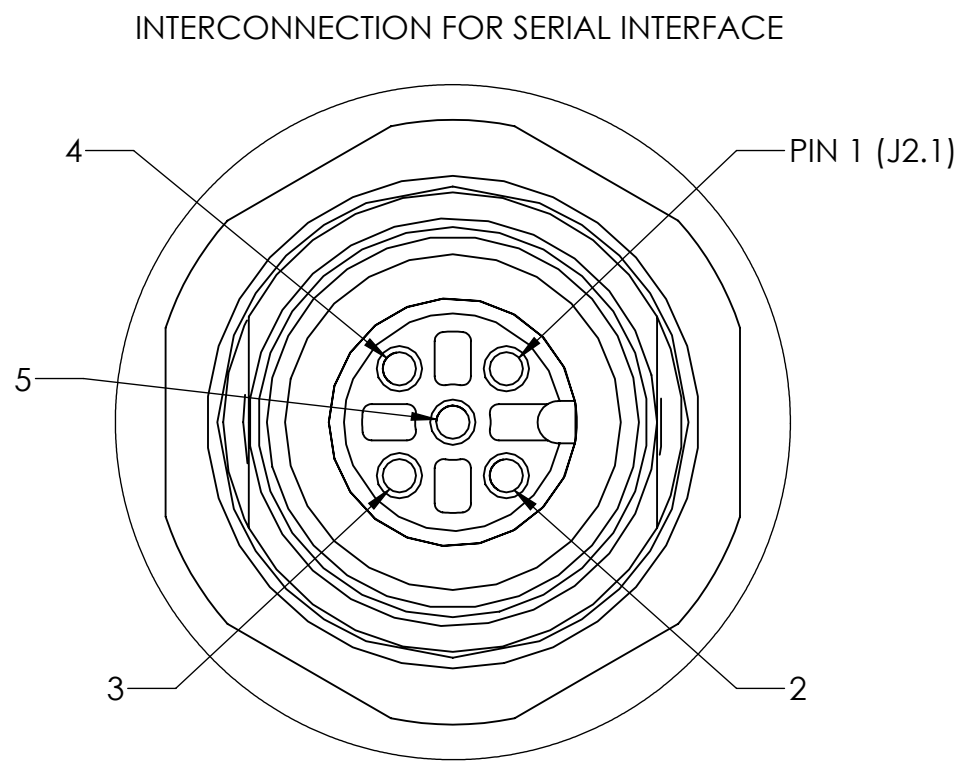


ANTENNA MOUNTING FEATURES

12



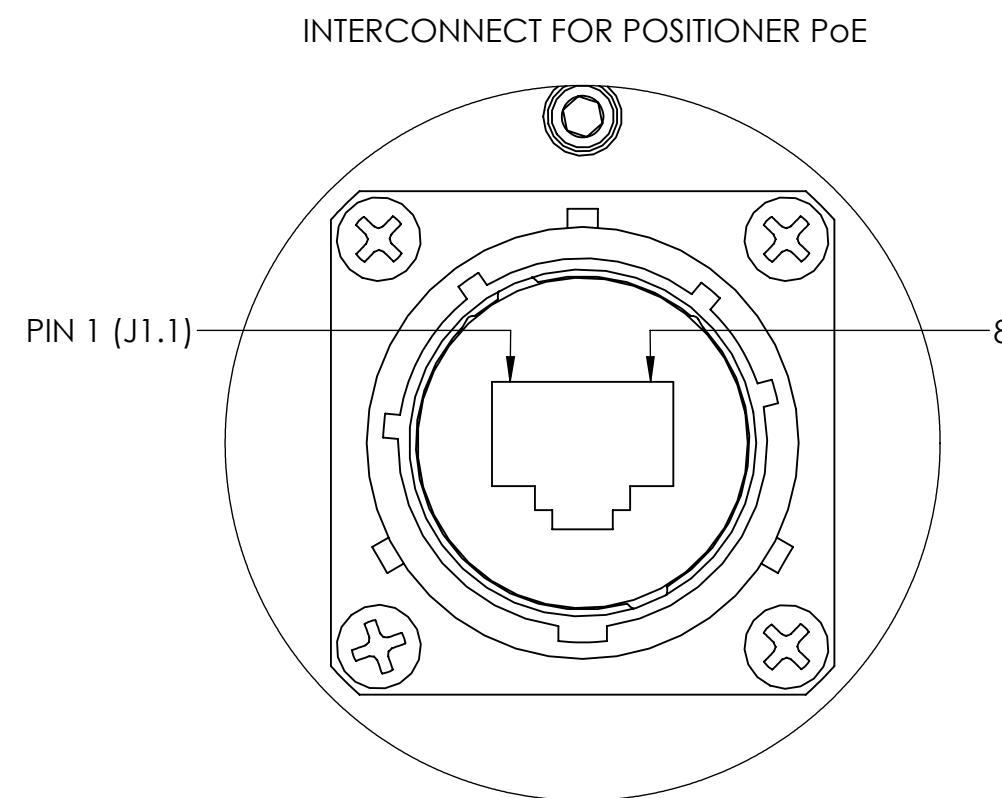
SECTION D-D
SHEET 2
ZONE D-4



J2 CONNECTOR SHOWN FROM MATING SIDE
MATES WITH TURCK P/N - 8515-0/PG-9

DETAIL C
SCALE 4 : 1
SEE TABLE III FOR PINOUT DETAILS

| TABLE III (SERIAL CONNECTOR) | |
|------------------------------|--------------------------------|
| CONNECTOR DESIGNATION | FUNCTION |
| J2.1 | DC RETURN FOR QPARUSA JOYSTICK |
| J2.2 | NOT USED |
| J2.3 | (B) TxD-/RxD- DATA LINE |
| J2.4 | (A) TxD+/RxD+ DATA LINE |
| J2.5 | DC POWER FOR QPARUSA JOYSTICK |



J1 CONNECTOR SHOWN FROM MATING SIDE
MATES WITH AMPHENOL P/N - RJF6B

DETAIL B
SCALE 2 : 1
SEE TABLE II FOR PINOUT DETAILS

| TABLE II (PoE CONNECTOR) | |
|--------------------------|---------------------------|
| CONNECTOR DESIGNATION | FUNCTION |
| J1.1 | DATA PAIR 1 |
| J1.2 | DATA PAIR 1 |
| J1.3 | DATA PAIR 2 |
| J1.4 | +48-56VDC PoE POWER INPUT |
| J1.5 | +48-56VDC PoE POWER INPUT |
| J1.6 | DATA PAIR 2 |
| J1.7 | DC RETURN FOR PoE INPUT |
| J1.8 | DC RETURN FOR PoE INPUT |